

LOGOS
& IDENTITY





Sugar
& Spice
Creative Services



wilycrafts
communications



wlycrafts
www.wlycrafts.com

wlycrafts
www.wlycrafts.com

wlycrafts
www.wlycrafts.com

wlycrafts
www.wlycrafts.com

S.S. #102 Sahajand Complex, Near Swasth Care Health, CG Road, Naraynpur, Ahmedabad 380 003 | Email: wlycrafts@gmail.com

S.S. #102 Sahajand Complex, Near Swasth Care Health, CG Road, Naraynpur, Ahmedabad 380 003 | Email: wlycrafts@gmail.com

S.S. #102 Sahajand Complex, Near Swasth Care Health, CG Road, Naraynpur, Ahmedabad 380 003 | Email: wlycrafts@gmail.com

S.S. #102 Sahajand Complex, Near Swasth Care Health, CG Road, Naraynpur, Ahmedabad 380 003 | Email: wlycrafts@gmail.com



Sugar & Spice
Creative Services

| S. Balasubramanian

98250 62676

bala.sugarnspice@gmail.com





KUMAR



Apurva Shah
M:+91-98250 13176



KUMAR

Kumar Cellular, Durga Mill Compound, Sheth M.P. Patel Road,
Himmatnagar (S.K), Pincode No.: 383 001 | kumar.cellular9@gmail.com

iPhone

VIVO

SAM



ProTechLives

We make it happen





BRINDA'S
TUITIONS



Brinda Balasubramanian

*A/61, Yash Towers, Opp. Ho
Off 100 Feet Road, Satel*

*T: 079-4006 6250
M: 098250 08217*



Brinda Balasubramanian

*A/61, Yash Towers, Opp. Hasubhai Park,
Off 100 Feet Road, Satellite, Ahmedabad - 380 015*

*T: 079-4006 6250
M: 098250 08217*

Personal Tuitions



MADHAV FARM

A2

GIR COW MILK



MADHAV FARM

A2

GIR COW MILK

Beshwar

बेशुमार

बेशुमार

Bhojanlal

भोजलाल

IDEA
EVENTS
ideate. innovate. initiate

IDEA
EVENTS
ideate. innovate. initiate



EVENTS

ideate. innovate. initiate

WIZZO  KRAFT
SOLUTIONS

WIZZO KRAFT
SOLUTIONS



WIZZOKRAFT
SOLUTIONS
www.wizzokraft.com

info@wizzokraft.com

E-71, Sadin Towers, Near Aankar Bazaar, 100 Feet Main Road, Satellite, Ahmedabad - 380054



WIZZOKRAFT
SOLUTIONS
E-71, Sadin Towers,
Near Aankar Bazaar,
100 Feet Main Road,
Satellite, Ahmedabad - 380054

WIZZOKRAFT
SOLUTIONS

Suresh K. Desai

www.wizzokraft.com
+91-79-26115677
info@wizzokraft.com

ReAlignTM
The Joint Replacement Specialist

‘TRUE-ALIGN’
TECHNIQUE

VERDDAAN
HOSPITAL 

ReAlignTM

The Joint Replacement Specialist



VERDDAAN HOSPITAL 

ORTHOSPORT
Specialty Hospital

Dr. Pranjol Pipara
Knee & Shoulder Surgeon (Private Practice)
Sports Injury | Arthroscopy | Surgery
Age: 44, 2015



BetterMe
KOH & KNEE MEDICAL

www.asstc.in
www.verddaan.com

Opp. Prithvishree Fire Station, Corporate Road, Ahmedabad - 380015
Chk No. UM33962/22/PTC/13/995

M: +91 99799 22229
pranjol@yahoo.com

VERDDAAN HOSPITAL 

Opp. Prithvishree Fire Station, Corporate Road, Ahmedabad - 380015

VERDDAAN HOSPITAL 

Dr. Pranjol Pipara
Knee & Shoulder Surgeon (Private Practice)
Sports Injury | Arthroscopy | Surgery
Age: 44, 2015

www.asstc.in
www.verddaan.com

Opp. Prithvishree Fire Station, Corporate Road, Ahmedabad - 380015

pranjol@yahoo.com

OrthoSport
Specialty Hospital

BetterMe
KOH & KNEE MEDICAL

SKYVISION
EVENTS

Maaru "FUSION INDIA"
Swapnshil
Gujarat

INDIA : +91-90168 61463
USA : +1-718-757-2840
Email: apateloffice@gmail.com

India Office Address:

515, Iscon Emporio,
Besides Star India Bazar,
Satellite, Ahmedabad - 380015
Telephones: +91-79980 60757
+91-79403 92588
swapnshilgujarat@gmail.com



ALPESH PATEL
(President & Founder)

US Office Address:

379 Princeton Heightstown Road,
Building 1, East Windsor,
New Jersey 08512
Telephone: 888-854-1928
www.swapnshil.com



Maanu



COLLATERALS **& BELOW-THE-LINE**

LOGO USAGE GUIDELINE



Logo



The logo is the primary visual element of the SGVP Holistic Hospital brand. It consists of a stylized 'H' made of four colored segments (blue, green, orange, and red) followed by the text 'SGVP HOLISTIC HOSPITAL' in a bold, sans-serif font. Below the text is the tagline 'THE SCIENCE OF WELLNESS, THE ART OF CARE' in a smaller, all-caps font.

The logo should be used consistently across all brand materials. It should be placed on a white background unless otherwise specified. The logo should be used in its full size and should not be cropped or distorted. The logo should be used in its original colors unless otherwise specified.

Logo
CMYK



- Primary Logo: Blue, Green, Orange, Red
- Secondary Logo: Blue, Green, Orange, Red
- Tertiary Logo: Blue, Green, Orange, Red
- Quaternary Logo: Blue, Green, Orange, Red

SGVP Holistic Hospital

Logo
Usage Guidelines

ADVERTISEMENT

IN INDUSTRY VERTICAL



Kitchen YEARBOOK

**AWARD
WINNER**
CHOOSE A DESIGN
FROM THIS YEAR'S
WINNING CROPS

**Small makes
BIG IMPACT**

**APPLIANCE
OF THE
YEAR**

*Chef's
inspired*

100 Recipes, Trends for 2022

CONTENTS

copy REGULARS

- 100 Recipes
- 100 Trends
- 100 Appliances
- 100 Designers
- 100 Products
- 100 Companies
- 100 Awards
- 100 Inspiration
- 100 Collaboration
- 100 Community



**Small makes
BIG IMPACT**



**APPLIANCE
OF THE
YEAR**

PRODUCT CATALOGUE



CENTRAL KITCHEN EQUIPMENT

Commercial Kitchen Equipment
The Complete Guide





CENTRAL KITCHEN EQUIPMENT

ABOUT US

Central Kitchen Equipment is the leading and recognised provider of commercial kitchen equipment in the UK. Our products are designed to meet the needs of the food service industry, from small businesses to large multi-site operations. Our products are designed to be reliable, durable and easy to maintain. We offer a full range of products, from small businesses to large multi-site operations. Our products are designed to be reliable, durable and easy to maintain. We offer a full range of products, from small businesses to large multi-site operations.

Central Kitchen Equipment is the leading and recognised provider of commercial kitchen equipment in the UK. Our products are designed to meet the needs of the food service industry, from small businesses to large multi-site operations. Our products are designed to be reliable, durable and easy to maintain. We offer a full range of products, from small businesses to large multi-site operations. Our products are designed to be reliable, durable and easy to maintain. We offer a full range of products, from small businesses to large multi-site operations.



TOP BRANDS
UNDER ONE ROOF

BEST
PRICES

GREAT AFTER
SALES SERVICE

GENUINE
SPARES

OUR RANGE

- 04 VEGETABLES CUTTERS
- 06 CHOCOLATE SHAWERS
- 08 DIMENSIONAL CUTTERS
- 10 COOKING EQUIPMENT
- 12 INDUCTION WORK
- 14 BUN MAKERS
- 16 MUFFIN MACHINES
- 18 CHILLERS
- 20 TROLLEY WASH
- 22 WASTE DISPOSERS
- 24 NEW RANGE
- 26 NEW RANGE
- 28 NEW RANGE

VEGETABLES CUTTERS
HALLDE RG-400



1 Main Machine

2 Stand

3 Hopper

4 Stand with wheels

5 Blade Cutter

VEGETABLES CUTTERS
HALLDE RG-250

PRODUCT FEATURES

- Supplied in all sizes
- Safe with safety stop
- Operate with standard commercial power
- Operates on electric system
- Easy cleaning
- High speed motor
- Heavy stainless steel
- Cutting from 1/2" to 1 1/2" diameter
- Heavy metal cutting blades
- Lightweight and easy to move



1 Main Machine

2 Stand/Stand with wheels

3 Electric Table

4 Cutter Table

5 Blade Cutter

MAGAZINE DESIGN



ZINDAGI

It's the smile of good health



ZINDAGI

It's the smile of good health





ZINDAGI

It's the smile of good health



Zydus Hospital
and Research Center
Plot No. 10, Sector 10, Gurgaon
Haryana - 122002
Toll Free Helpline: 1800 123 1432
www.zydusindia.com





NEWS @ ZYDUS HOSPITAL

FCCM Programme



Dr. Rajesh Kumar, Director of the Emergency Medicine Program at Zydus Hospital, has been awarded the Fellowship of Fellowship of the College of Critical Care Medicine (FCCM) of the American Society of Critical Care Medicine (ASCCM) and the American Society of Emergency Medicine (ASEM) and the American Society of Intensive Care Medicine (ASICM).

Hurray's Day celebration

Thank you to all the staff members who have made it so easy for us to work together. As we move forward, we will continue to work together to achieve our goals. We are proud of the achievements of our staff and the support of our patients. We will continue to work together to achieve our goals.

First Cochlear Implant Surgery



A team of experts at Zydus Hospital has successfully performed the first cochlear implant surgery in the region. The patient, a 45-year-old man, has regained his hearing. The surgery was performed by Dr. [Name] and the team. The patient is now able to hear and communicate with others. This is a significant milestone for the hospital and the region.

Emergency Medicine Program @ Zydus Hospital



The Department of Emergency Medicine at Zydus Hospital is a leading center for emergency care. We provide 24/7 care for all emergency medical conditions. Our team of experts is trained to handle all types of emergencies. We have a state-of-the-art facility with the latest equipment. We are committed to providing the highest quality of care to our patients. We are proud of our achievements and the support of our patients. We will continue to work together to achieve our goals.



LIVE SURGICAL WORKSHOP ON SNOORING AND SLEEP APNOEA

A live surgical workshop on snoring and sleep apnoea was held at Zydus Hospital. The workshop was attended by a group of experts from the region. The workshop focused on the latest techniques for the treatment of snoring and sleep apnoea. The experts discussed the importance of early diagnosis and treatment. They also discussed the latest equipment and techniques. The workshop was a great success and provided valuable information to the participants.

Discharge Panelist



Dr. [Name] is a leading expert in the field of emergency medicine. He has been invited to speak at the Discharge Panelist conference. He will discuss the latest techniques for the treatment of emergency medical conditions. He will also discuss the importance of early diagnosis and treatment. He is a member of the American Society of Emergency Medicine (ASEM) and the American Society of Intensive Care Medicine (ASICM).

INSIDE OUT



Dr. [Name] is a leading expert in the field of emergency medicine. He has been invited to speak at the Inside Out conference. He will discuss the latest techniques for the treatment of emergency medical conditions. He will also discuss the importance of early diagnosis and treatment. He is a member of the American Society of Emergency Medicine (ASEM) and the American Society of Intensive Care Medicine (ASICM).



Get & help with Zimbalab



Zimbalab is a leading provider of emergency medical equipment. We provide a wide range of equipment for all types of emergencies. We are committed to providing the highest quality of equipment to our customers. We are proud of our achievements and the support of our customers. We will continue to work together to achieve our goals.

DOCTOR PROFILE



Dr. N. N. Sharma - **Emergency Medicine**
 Dr. Sharma is a leading expert in the field of emergency medicine. He has been awarded the Fellowship of Fellowship of the College of Critical Care Medicine (FCCM) of the American Society of Critical Care Medicine (ASCCM) and the American Society of Emergency Medicine (ASEM) and the American Society of Intensive Care Medicine (ASICM). He is a member of the American Society of Emergency Medicine (ASEM) and the American Society of Intensive Care Medicine (ASICM). He is also a member of the American Society of Critical Care Medicine (ASCCM) and the American Society of Intensive Care Medicine (ASICM).

TEST YOUR KNOWLEDGE



ANSWER

1. The name of the...
2. ...
3. ...
4. ...
5. ...
6. ...
7. ...
8. ...
9. ...
10. ...
11. ...
12. ...
13. ...
14. ...
15. ...
16. ...
17. ...
18. ...
19. ...
20. ...

Gujarat shines again

in the national & international awards

The Government of Gujarat has been awarded the National Award for Best State in the field of Health & Family Welfare for the year 2010-11.

60

60



Anup Kumar
He has been...
in the...
of...



Anup Kumar
He has been...
in the...
of...



Anup Kumar
He has been...
in the...
of...



Anup Kumar
He has been...
in the...
of...



Anup Kumar
He has been...
in the...
of...



Anup Kumar
He has been...
in the...
of...

THE TESTIMONIES

BROCHURES & LEAFLETS



ગુજરાતી
લેક્ષિકન

Gujarati
Lexicon



**WORLD'S BIGGEST
ONLINE GUJARATI
LANGUAGE RESOURCE**

**OUR LANGUAGE
OUR CULTURE**

VISION
Language + Technology

MISSION
Preserving, curating and promoting Gujarati language and cultural resources through the use of world-class and contemporary technological tools

ABOUT GUJARATILEXICON

GujaratiLexicon is the first, the largest and the most comprehensive online digital resource in Indian language. GujaratiLexicon is a landmark in the history of Gujarati language and culture, amounting to more than 4.5 million words. It is the result of an arduous process and scientific format of Dr. Jay Shah and P. Chhabaria, who had spent more than 10 years on this project.

Since its launch in 2010, GujaratiLexicon has grown to be the #1 web portal of Gujarati language lovers with more than 400,000 registered users and 60,000,000+ views.



ABOUT NIMBARKOMADAL

- Cultural lexicon of Gujarati language
- Comprehensive, scientific and rich resource of knowledge
- 1.20 lakh words, 622 lakh meanings, 20 years of research, 100 lakh+ views all through free use
- Digital Gujarati wordbook launched in 10 countries
- India's largest

with its release in 10 languages, Ministry of Culture of India gave the award 'Digital Komadala' to the project. Digital Komadala is the world's largest digital wordbook and digital wordbook of Gujarati language.



GujaratiLexicon Team digitized Shri Jagdishprasad Jethwanji's Gujarati wordbook in a record time of 13 months. Shri Jagdishprasad Jethwanji dedicated the project to the world in April 2009.

Gujarati Lexicon

410, Shivomare Complex, Sakinaka Kankar Sarani,
Bajar Jhansi Ram Bafas, Ahmedabad - 380013
Gujarat, India

info@gujaratilexicon.com
+91 79 4890 9758
+91 8253414963

Follow Us: [Social media icons]

CONNECT WITH GL

- GL Ambassadors
- GL Bloggers
- Subscriber / Word of the Day (WOTD) / Quote of the Day (QOTD)

INTERACT WITH GL
Team GujaratiLexicon welcomes your ideas, creation, suggestions and feedback.

info@gujaratilexicon.com
+91 8253414963



DONATIONS

We invite donations for supporting GujaratiLexicon project and support language. For support help us continue and accelerate the work on GujaratiLexicon. Team GujaratiLexicon wants to create a Gujarati World Heritage Centre. Please make donations online at gujaratilexicon.com/donations/



GL Corporate Solutions
Digitization / Localization / Special Projects

Gujarati Culture and Heritage Foundation
Gujarati Culture and Heritage Foundation aims to preserve, nurture, promote the language, local resources, culture, etc. through the use of world-class and contemporary technological tools, serving the Gujarati community. The Trust is registered under Bombay Public Trust Act 1956 and other laws governing the public charitable trust.

gclg.org.in/



GL Mobile Apps

QR code for downloading apps

To download apps scan QR code



Maaru
"VISION INDIA"
Swapnshil
Gujarat
GUJARAT TO GLOBAL CULTURAL
& BUSINESS SUMMIT

FIRST TIME IN ATLANTA, GEORGIA



Annual Call



Mr. Swapnil Patel is the Secretary of Gujarat Chamber of Commerce & Industry (GCC) in Atlanta, Georgia. He has been instrumental in the establishment of the Gujarat Chamber of Commerce & Industry in Atlanta, Georgia. He is a member of the Gujarat Chamber of Commerce & Industry in Atlanta, Georgia. He is also a member of the Gujarat Chamber of Commerce & Industry in Atlanta, Georgia. He is also a member of the Gujarat Chamber of Commerce & Industry in Atlanta, Georgia.

The 2017 Convention Center, which is the largest of its kind in the world, is located in Atlanta, Georgia. It is a state-of-the-art facility that will host the Gujarat Chamber of Commerce & Industry Convention in Atlanta, Georgia. The convention will be held from December 21st to 23rd, 2017. It will be a three-day event that will feature a variety of activities, including a keynote address, a panel discussion, a networking session, and a cultural program. The convention will be a great opportunity for Gujarat Chamber of Commerce & Industry members to meet and network with other members from around the world.



CELEBRATING MAHATMA GANDHI'S 150TH BIRTHDAY
AND INSTALLATION OF HIS STATUE WITH AN EXHIBITION

- Wife Seminar / Shopping Seminar / After Dinner
- Fashion Show / Business Seminar / Sports
- Business / Awards / Dinner / Gala Dinner
- Dinner & Gala / Cultural Events / Live
- Exhibition / Cultural Events / Live
- Exhibition / Cultural Events / Live

Corporate & Vendor Booth Space/availability available

FIRST TIME IN ATLANTA, GEORGIA
Gujarat Chamber of Commerce & Industry Convention
2017 Convention Center, Convention Center
Galleria Park, Atlanta, Georgia 30327
DEC 21 to DEC 23, 2017

More than 50,000 weekly visitors from Georgia, South Carolina, North Carolina, Tennessee, Alabama, Florida and surrounding areas



Maarv
Swapnishi
Gujarat
GUARANTY TO GLOBAL CULTURAL & BUSINESS SUMMIT



Water purifying is a science. Understanding water and its purification processes is essential. Lotus RO System has been designed to meet the needs of all homes & businesses and help you have the best of water. To get the best, let us help you.

Lotus RO System

HOW IT WORKS:

- 100% water for people through the RO membrane and then drinking water
- Removes 99% purification to ensure 100% pure hygiene
- Lotus RO System does not over treat water and take it of its given your water you can trust completely
- It helps build the flora from your body, boosting immunity
- Activates water molecules and improves oxygen level in the body
- It protects your family from danger of water borne diseases
- Performance
- Removes odors and hardness from the water retained

Strong Impact

- Converts polluted water into safe, pure and hygienic potable water
- Has a sleek and compact design saving space
- Has automatic refilling ensuring fresh water always
- User programmed alerts with value addition

TECHNICAL DETAILS

- Food grade plastics used
- Convenient installation - Wall mounted OR Counter top

Large Water Tank - 15 Lit. Pure and Hygienic water available all the time

- Water Purification capacity - 15 Lit./hr.
- Product Dimensions - (G) 465mm x (D) 335mm x (H) 332mm
- Product Weight - 7.5 kg
- Input Voltage - 230V, 50Hz AC
- Power Rating (Max) 60W

Lotus

- Glossy transparent tank with LED
- Beautiful chrome plated tap
- Command On/Off button
- Adjustable water with pH between 6.5-8.5




Lotus
VitaRO RO

WATER AS PURE AS MOTHER'S LOVE

Lotus



HEY! LOOKING OUT FOR FRESHLY FRIED CHICKEN?

Call Us Now: +1 603-356-7100!

FRESHLY MADE,
PERFECTLY CRISP

OPEN FROM
11AM TO 12 AM

**KRISPY
KRUNCHY**
CHICKEN



- Order online at www.krispykrunchy.com so that we can get it cooked specially for you.
- Our chicken is always fresh, made everyday.
- We deliver till midnight.
- We offer Door-step delivery while you can have take-aways too!
- Tenders & Bone-ins along with biscuits & fries make a complete meal.



Mac'n' Cheese
Several other



Biscuits



Waffle Fries

Website:
krispykrunchy.com

2020 White Mountain Highway
North Conway, New Hampshire, USA

HEY! LOOKING OUT FOR FRESHLY FRIED CHICKEN?

Call Us Now: +1 603-356-7100!

FRESHLY MADE,
PERFECTLY CRISP

OPEN FROM
11AM TO 12 AM

**KRISPY
KRUNCHY**
CHICKEN



- Order online at www.krispykrunchy.com so that we can get it cooked specially for you.
- Our chicken is always fresh, made everyday.
- We deliver till midnight.
- We offer Door-step delivery while you can have take-aways too!
- Tenders & Bone-ins along with biscuits & fries make a complete meal.



Mac'n' Cheese
Several other



Biscuits



Waffle Fries

Website:
krispykrunchy.com

2020 White Mountain Highway
North Conway, New Hampshire, USA

RESEARCH REPORT







RESEARCH REPORT & BUSINESS PLAN

Urban Diagnostic Masterplan



A member of the WIZKRAFT GROUP

INDEX

- 1. Introduction
- 2. The Urban Diagnostic Masterplan
- 3. The Urban Diagnostic Masterplan
- 4. The Urban Diagnostic Masterplan
- 5. The Urban Diagnostic Masterplan
- 6. The Urban Diagnostic Masterplan
- 7. The Urban Diagnostic Masterplan
- 8. The Urban Diagnostic Masterplan
- 9. The Urban Diagnostic Masterplan
- 10. The Urban Diagnostic Masterplan
- 11. The Urban Diagnostic Masterplan
- 12. The Urban Diagnostic Masterplan
- 13. The Urban Diagnostic Masterplan
- 14. The Urban Diagnostic Masterplan
- 15. The Urban Diagnostic Masterplan
- 16. The Urban Diagnostic Masterplan
- 17. The Urban Diagnostic Masterplan
- 18. The Urban Diagnostic Masterplan
- 19. The Urban Diagnostic Masterplan
- 20. The Urban Diagnostic Masterplan
- 21. The Urban Diagnostic Masterplan
- 22. The Urban Diagnostic Masterplan
- 23. The Urban Diagnostic Masterplan
- 24. The Urban Diagnostic Masterplan
- 25. The Urban Diagnostic Masterplan
- 26. The Urban Diagnostic Masterplan
- 27. The Urban Diagnostic Masterplan
- 28. The Urban Diagnostic Masterplan
- 29. The Urban Diagnostic Masterplan
- 30. The Urban Diagnostic Masterplan
- 31. The Urban Diagnostic Masterplan
- 32. The Urban Diagnostic Masterplan
- 33. The Urban Diagnostic Masterplan
- 34. The Urban Diagnostic Masterplan
- 35. The Urban Diagnostic Masterplan
- 36. The Urban Diagnostic Masterplan
- 37. The Urban Diagnostic Masterplan
- 38. The Urban Diagnostic Masterplan
- 39. The Urban Diagnostic Masterplan
- 40. The Urban Diagnostic Masterplan
- 41. The Urban Diagnostic Masterplan
- 42. The Urban Diagnostic Masterplan
- 43. The Urban Diagnostic Masterplan
- 44. The Urban Diagnostic Masterplan
- 45. The Urban Diagnostic Masterplan
- 46. The Urban Diagnostic Masterplan
- 47. The Urban Diagnostic Masterplan
- 48. The Urban Diagnostic Masterplan
- 49. The Urban Diagnostic Masterplan
- 50. The Urban Diagnostic Masterplan

Challenge: Urban Diagnostic Masterplan

The Urban Diagnostic Masterplan is a comprehensive study that provides a detailed analysis of the urban environment. It covers various aspects of the city, including its infrastructure, social structure, and economic activities. The report aims to identify the strengths and weaknesses of the urban system and provide recommendations for improvement. The study is based on a thorough review of existing data and field research. The findings of the study are presented in a clear and concise manner, making it easy to understand and use. The report is a valuable tool for urban planners and decision-makers. It provides a solid foundation for the development of a sustainable and vibrant urban environment. The Urban Diagnostic Masterplan is a key component of the Urban Diagnostic Masterplan. It provides a detailed analysis of the urban environment and identifies the strengths and weaknesses of the urban system. The report aims to provide recommendations for improvement and is a valuable tool for urban planners and decision-makers. The Urban Diagnostic Masterplan is a key component of the Urban Diagnostic Masterplan. It provides a detailed analysis of the urban environment and identifies the strengths and weaknesses of the urban system. The report aims to provide recommendations for improvement and is a valuable tool for urban planners and decision-makers.



Intense competition for new diagnostic centres.

Arb Diagnostic is the 1st choice of the respondents where 44.29% respondents listed it. It is followed by MedicaLabs with a score of 43.26% and Dr. Lal PathLabs with 33.33%. Synlab, which is a national diagnostic chain is not a strong competitor in Udaipur and only 10.7% respondents listed it. The respondents rated fee rates and delays as the focus of cost, service, waiting time and reliability on the basis of cost, service, waiting time and reliability.

To further justify the reason for listing the three main centres of Udaipur, the team at Wiprosoft went to the diagnostic centres and collected the data from there. As it was a personal visit by the team, other factors like location, staffs, equipment, infection control and cost management were also observed.

Here we would like to share some graphical data to show the volume of business for MRI, CT, X-Ray & Sonography to track and measure competitor technology mix.

The volume of MRI is good in Udaipur. Though very few diagnostic centres have it but the three main centres, Arb Diagnostic, Star Imaging and MedicaLabs contribute the maximum. All the three centres have 15 units MRI machines. Star Imaging does the maximum number of MRI with 30-35 MRI per day followed by MedicaLabs with 20-25 MRI per day and Arb with 20 MRI per day.

MRI MACHINE - DIAGNOSTIC CENTRE



The volume of CT scans also very high, and the city has good number of CT scan machines. During the pandemic the number of CT scans done was very high and many new machines were also installed by the street-side parties. Arb diagnostic does the maximum number of CT scan with 6 CT/day followed by MedicaLabs with 10 CT/day and both Dr. Lal PathLabs and Synlab have 5

CT/day each. Dr. Lal PathLabs is the Diagnostic Medicine and Test Lab with 6 X-ray machines.

CT SCAN MACHINE - DIAGNOSTIC CENTRE



X-Ray, which is the most common diagnostic test, remains a good potential in Udaipur. Arb Diagnostic tops the list in volume with around 25 X-rays per day followed by MedicaLabs with 10-15 X-rays per day. Dr. Lal PathLabs with 40-50 X-rays per day, Arb with 30-35 X-rays per day and Star Imaging 20-30 X-rays per day each. MedicaLabs has two X-ray machines whereas others have only one X-ray machine each. Most of the machines are high frequency.

X-RAY MACHINE - DIAGNOSTIC CENTRE



Sonography is also in demand in Udaipur and most of the top diagnostic centres have more than one machine. They have contributed to both L. Synlab & MedicaLabs with 47% & 54% machines and 33% machines each. Dr. Lal PathLabs and Synlab have 2 machines each, Arb Diagnostic & MedicaLabs have 2 machines each. Others have one machine each. MedicaLabs and Arb Diagnostic go neck to neck with Arb Diagnostic doing 60-75 procedures per day and MedicaLabs doing 50-60 procedures per day followed by Dr. Lal PathLabs and Synlab where Dr. Lal PathLabs does 30-35 per day and Synlab does 15-20 procedures per day. Arb with 20-25 procedures per day and Star Diagnostic does 10-15 procedures per day.

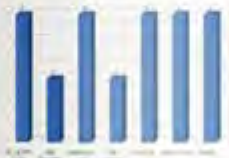
Star Imaging & MedicaLabs have 2 machines each, Arb Diagnostic has 2 machines each.

SONOGRAPHY MACHINE - DIAGNOSTIC CENTRE



as satellite centres of the diagnostic centres begin to surpass the span of reach among the target segment for the diagnostic centres. From the patients and their relative point of view, it becomes free competition as they have a choice in their locality or nearby. Most of the diagnostic centres have 2 waiting centres except Arb Diagnostic & Star Imaging which has only 1 waiting centre in Udaipur. But when it comes to sample collection centre, MedicaLabs tops the list with 245 sample collection centres followed by Dr. Lal PathLabs with 145 sample collection centres and Arb with 77 and Arb Diagnostic has 2 sample collection centres.

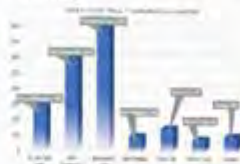
WAITING CENTRE



SAMPLE COLLECTION CENTRE



The number of satellite centres have a direct impact on the footfall of these diagnostic centres as the graph illustrates clearly.



STAFFING CAPACITY - DIAGNOSTIC CENTRE

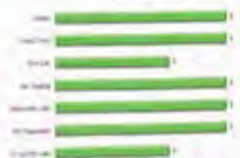


MedicaLabs tops the list with the highest footfall of around 300 people per day followed by Arb Diagnostic with 160 and Dr. Lal PathLabs with 300 people per day. The footfall of Star Imaging, Synlab, Haven X-Ray and Asevali are between 80 to 150 per day.

High footfall should also get some place to sit in the diagnostic centres. The reason many respondents rated Arb Diagnostic very high is because here they have good capacity for people to sit. The chart above illustrates the sitting capacity of different diagnostic centres of Udaipur.

The footfall of the diagnostic centre directly influences the volume of business and in turn the ROI.

APPOINTMENT TIME



**OLD BOYS
GET-TOGETHER
MEMORABILIA**



RCE - Ajmer (B. Tech. Ed)
Alumni Meet Ahmedabad 2019
REUNION SOLWENIR



3rd Reunion at Ahmedabad
12-15 January 2019

INVITATIONS

Kumar is reinventing itself
The identity has changed



Time: 11.00 am
Kumar Cellular (Main Showroom)
Durga Mill Compound, Sheth M. P. Patel Road,
Himmatnagar.

Time: 9.45 am
Kumar Cellular (Mahavimagar branch)
1, Lakshminarayan Society, Gayatri Mandir Road,
Mahavimagar, Himmatnagar.

Mobile: 98250 13176

Inauguration on:
04.03.2019 (Monday, Mahashivratri)



Kumar Family

*In 1988, with the inauguration by
Shri. Ramenobhai J. Sheth, started a
sowing the seeds of Trust and Transparency.
With love he nurtured it, and it has grown into a
mighty Banyan Tree. The tradition of trust and
transparency is now firmly rooted on solid ground.
We add your esteemed presence to grace the
occasion of dual inauguration of our latest
Kumar showrooms.*



KUMAR

iPhone

VIVO

SAMSUNG

lenovo

motorola

MI



A great joy is coming!

invitation
for

Baby
Showers



RSVP : Dr. Harshil : +91-99256 40688

It is going to be **cuddly soon**

'cause
We're expecting a baby,
a new bundle of joy
A very special gift,
be it a girl or a boy!

*It's a Baby Shower for Priya & Harshil,
on Sunday, December 10th at 11.00 a.m
Hotel Pragati 'The Grand',
Zydus Hospital Road,
S 6 Highway, Thaltej,
Ahmedabad - 380 059*

Please join us to bless the would-be parents:
Dr. Mahendra Dharaiya
(Would be Grandpa)
Mrs. Daxa Dharaiya
(Would-be Grandma)

**IN-SHOP BRANDING
&
SHOP BOARDS**



1966



1973

ETHICS
PARTNERSHIP



1981

TRUST
INTEGRITY Service
SUPPORT
IDEAS

INTEGRITY
PARTNERSHIP
TRUST

Expertise
Ethics
Transparency
SUPPORT
EXPERIENCE
TRUST
INTEGRITY Service
PARTNERSHIP SUPPORT
IDEAS

1966



1966

TRANSPARENCY
TRUST
INTEGRITY
SUPPORT
EXPERIENCE
Service
TRUST
INTEGRITY
PARTNERSHIP

1966

TRANSPARENCY
TRUST
INTEGRITY
SUPPORT
EXPERIENCE
Service
TRUST
INTEGRITY
PARTNERSHIP

સત્ય અને સહયોગ એક
સાથે જીવવાનો માર્ગ છે.
આજે, જ્યારે સમગ્ર દેશમાં
આવી શકે તેટલો ભ્રષ્ટ્રાચારો
એક સમસ્યા બની ગઈ છે,
ત્યારે આજે એક સમસ્યા બની ગઈ છે.



2013



2019

K KUMAR





U&I Beauty Care

(For Ladies Only)

M: 96628 45866

Let your looks speak for you...
OPEN FROM: 11.00 am to 7.00 pm

- Facial
- Clean up
- De-Tan
- Waxing
- Body Wax
- Face Wax
- Manicure
- Pedicure
- Hair Cut
- Hair Spa
- Smoothing
- Straightening

M: 96628 45866

U&I Beauty Care

(For Ladies Only)



Let your looks speak for you...



U & I

Beauty Care

(For Ladies Only)

Let your looks speak for you...

OPEN FROM: 11.00 am to 7.00 pm

M: 96628 45866

- Facial
- Clean up
- De-Tan
- Waxing
- Body Wax
- Face Wax
- Bikini Wax
- Manicure
- Pedicure
- Hair Cut
- Hair Spa
- Smoothing
- Straightening

Parlour courses available
To know more Call: 96628 45866

ENVIRONMENTAL GRAPHICS

અંદરનું બાહક જીવંત તો જગ જીવંત



મન કહે તે જ સાચી ઉંમર



EVENT BACKDROP



OPEN MIC
ORGANISED BY



"punctuations"

PRODUCT LABELS & DIWALI GIFTING



Wish you all a Happy Diwali
& a prosperous New Year
Shubh Purnam



Happy
Diwali

Gujarat to Global Cultural & Business Summit | DEC 19 to DEC 21, 2019



SOCIAL MEDIA CREATIVES

**BRINDA'S
TUTIONS**



**HOME
TUTIONS**
TUTORING SINCE 2003

Helping Your
class 1 to class 9 kids
Succeed at School



MULTIMEDIA
ENGLISH
SCIENCE
HINDI
COMPUTER
GUJARATI

I am educated in English medium. I have 4 years of experience in teaching to ensure proper concepts are taught.

3 of my students have secured admission in Medicine and 2 in Computer Engineering in merit.

TO BOOK PERSONAL TUITIONS FOR YOUR CHILDREN:

☎ 098250 08217

☎ 079-4006 6250



Brinda Balasubramanian, A-61, Yash Towers,
Opp. Hazratbhai Park, Off 100 Feet Road,
Satellite, Ahmedabad - 380015

**BRINDA'S
TUTORING**



**HOME &
ONLINE**
TUTORING SINCE 2003

Helping Your
class 1 to class 9 kids
Succeed at School

MATHEMATICS
ENGLISH
SCIENCE
HINDI
SOCIAL STUDIES
GUJARATI



I was educated in English medium. I take a small batch of students to ensure proper personal attention and prefer to tutor kids in person.

3 of my students have secured admission in Medicine and 2 in Computer Engineering on merit.

TO BOOK PERSONAL TUITIONS FOR YOUR CHILDREN:

CALL:

098250 08217

079-4006 6250

Address:

Brinda Balasubramanian, A-61, Yash Towers,
Opp. Hazratbhai Park, Off 100 Feet Road,
Satellite, Ahmedabad - 380015

Happy
Maha Navami



Sugar & Spice
Creative Services

3 Road, ...
© 2015, ...
New ...
...
...

SHAHED VEER
BHAGAT SINGHI KO
SHAT SHAT NAMAN



Sugar & Spice
Creative Services