




**WORKFORCE HR LLP**



**Helping You Build Teams & Dreams**

---

**Manpower Solutions | Healthcare Solutions | Educational Consultancy**

A close-up photograph of a hand holding a single red wooden figure, which is a stylized human figure with a rounded head and a conical body. The hand is positioned at the top of the frame, with the thumb and index finger gripping the top of the red figure. Below the red figure, a row of several white wooden figures of the same shape is visible, but they are out of focus. The background is a soft, light blue gradient. In the top right corner, there is a dark grey downward-pointing triangle.

***“HELPING YOU  
BUILD TEAMS  
AND DREAMS”***



## ***WELCOME TO WORKFORCE HR LLP***

As an HR consultant in Mumbai, India, we offer a wide spectrum of recruitment and manpower solutions tailored to your business needs. Workforce HR LLP plays a key role in developing, reinforcing, and changing the culture of an organization. From sourcing to staffing, from hiring managers to HR professionals, from offshore or onshore consultants to project management - we've got you covered. Our services are reliable and felicitous at the same time.

Our vision is to facilitate companies with individuals who are aligned with their present and future plans. At Workforce HR we aim to add value for our clients and candidates by discovering opportunities and providing consistently efficient HR solutions. We thrive to become a one-stop recruitment solution for all our clients and candidates.



*Mr. Mirza Ishaque  
Mirza Athar Baig,  
Managing Director.*

*Mr. Thomas K.A,  
Business Development  
Director.*

## ***MEET THE TEAM***



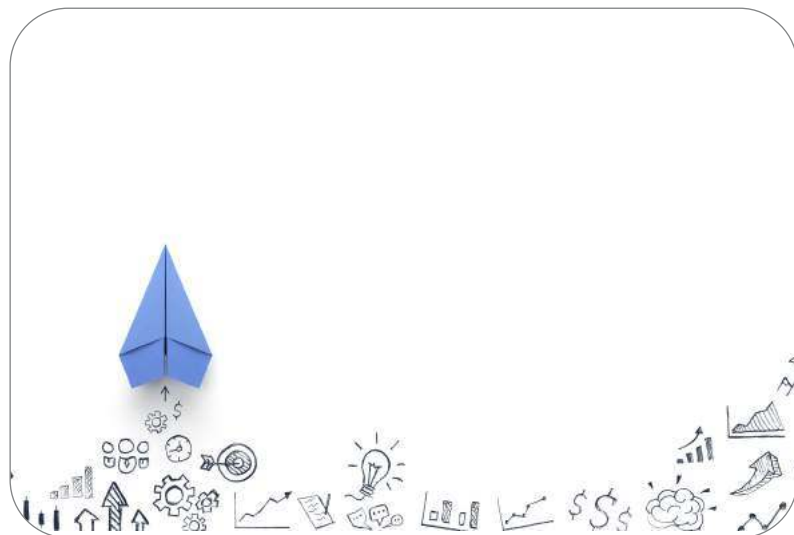
## Why Us?

We strive to find the right candidates who can help the organization and themselves grow together simultaneously. We have a team of professionals with a proven track record of executing successful recruitment strategies for your projects.

We believe hiring to be the most important first step towards an organization's success.



**AFTER DEPLOYMENT SUPPORT  
AND GRIEVANCE REDRESSAL**



## Why Work abroad ?

Opting to work abroad can be for various reasons, although the most common reason is the prospect for better career opportunities. Working abroad is a great experience as it develops an individual's cultural intelligence, enhances their skillsets, and helps in expanding their professional and social network, while also opening doors for new opportunities globally.



**PUNCTUALITY AND  
ON-TIME DELIVERY**





## **Talent Sourcing**

Attracting top talent is critical towards the successful future of any organization. Our talent sourcing process involves engaging with passive as well as active candidates. This type of outreach enables a candidate to understand the benefits of working with your organization, while it also keeps the door open to unsuccessful candidates for a future hire within your organization. Keeping such lines of communication open also provides a wealth of talent pool for your organization for the future.



## **Talent Assessment**

An organization achieves maximum productivity when the employees and their job roles are perfectly aligned. We conduct various personality assessment tests such as Situational Judgement Test, Behavioral Assessment, etc. which help us in understanding an individual's decision making, responsiveness, patience, emotional stability and extroversion, aspects critically important for a precise recruitment.



## **Deployment Services**

We at Workforce HR ensure that our clients enter the visa and immigration process only once they are best placed to successfully be issued one. While we also take responsibility for the entire medical and ticketing process and ensure the best services are provided to our clients and candidates.



High Quality Standards



Result-Oriented Operations



Top Notch Services



Fulfill Customer Expectations and Satisfaction

STEP  
**01**

## Trade Test

Refer candidates for trade test.

Receive trade test reports.

STEP  
**02**

## Medical

Refer for medical examination.

Receive medical report.

STEP  
**03**

## Agreement

Prepare foreign service agreement.

STEP  
**04**

## Forms

Obtain relevant forms for employer's embassy.

STEP  
**05**

## Visa

Submit documents for visa approval.

STEP  
**06**

## Passport

Receive passport from consultant.

STEP  
**07**

## Emigration

Send passport for emigration if required.

STEP  
**08**

## Papers

Send papers for travel arrangements.

STEP  
**09**

## Documents

Prepare documents for clearance.

STEP  
**10**

## Book seats

Book seats for traveling.

STEP  
**11**

## Employer

Inform employer by tele/fax/email about the travel details.

STEP  
**12**

## Dispatch

Reception by employer.



## ► HEALTHCARE SOLUTIONS

Workforce HR is an international healthcare recruitment company. We help healthcare professionals find employment in healthcare facilities around the globe. Our goal is to provide useful resources that help you reach your goals. We at Workforce HR, believe that paramedics are powerful tools for change, they can be the catalysts for change that improves the wellbeing of everyone.

We believe that we can contribute to this change by ensuring that only the best individuals are recruited through us, ones who thrive to make a positive difference towards the wellbeing of communities globally.

At Workforce HR, we believe in the importance of recruiting and training international paramedical staff.

We place the best staff in healthcare facilities all around the world. In the event that you have an immediate need for medical care or anticipate a future need, we are always ready to contribute.



# Recruitment Process

## NURSING CAREER - UNITED KINGDOM



## CRITERIA FOR A NURSING CAREER IN UNITED KINGDOM (NON-EU CITIZENS)

Each country has its own set of requirements which needs to be fulfilled by the candidate before or during the process of recruitment.

If you are a paramedical staff considering to settle or pursue your career internationally, we at Workforce HR can assist you all throughout the way.

- ✓ Be a fully qualified, registered medical practitioner/nurse.
- ✓ Prove your English language ability (IELTS or OET Exam).
- ✓ Complete NMC eligibility and Qualification Application.
- ✓ Successfully clear computer-based test (CBT).
- ✓ Attend job interview and successfully secure job offers.
- ✓ Secure Certificate of Sponsorship from client.
- ✓ Submit Tier 2 Health & Care Worker Visa Application.
- ✓ Flight to the UK.
- ✓ Attend Objective Structured Clinical Examination (OSCE).
- ✓ Complete NMC Registration & Work as a registered nurse in the UK.

- ✓ Bachelors (BSN) / Diploma in Nursing.
- ✓ Valid Nursing Registration License.
- ✓ Minimum 6 months experience preferred in the same facility from a tertiary hospital.
- ✓ Experience letter from the tertiary hospital.
- ✓ Educational qualification certificates.
- ✓ Successful clearance of IELTS or OET exam with the required score.



### IELTS Score Requirement for UNITED KINGDOM

Listening – 7.0  
 Reading – 7.0  
 Writing – 6.5  
 Speaking – 7.0  
 Overall – 7.0

### OET Score Requirement for UNITED KINGDOM

Speaking – B  
 Listening – B  
 Reading – B  
 Writing – C+

# CATEGORIES



## DOCTORS

- ✓ Cardiologist.
- ✓ Gynaecologist.
- ✓ Pediatrician.
- ✓ Nephrologist.
- ✓ Anesthetists.
- ✓ Psychiatrists.
- ✓ Orthopedics.
- ✓ Ophthalmologist.
- ✓ Endocrinologists.
- ✓ Radiologist.
- ✓ Internal Medicine,  
General Medicine.
- ✓ Microbiologist.
- ✓ Pathologist.
- ✓ Dentists.
- ✓ Medicine.
- ✓ Dietician.
- ✓ Clinical Pathology.
- ✓ Cosmetic & Reconstructive Surgery.
- ✓ Dermatology.
- ✓ Emergency Medicine & Trauma.
- ✓ ENT.
- ✓ Gastroenterology.
- ✓ Neonatology.
- ✓ Neurosurgery.
- ✓ Oncology (Medical & Surgery).
- ✓ Ophthalmology.
- ✓ Physiotherapy & Rehabilitation.
- ✓ Panic Healing.
- ✓ Psychiatry & Psychometry.
- ✓ Spine Surgery.
- ✓ Urology.
- ✓ Pulmonary Medicine.



Catalyst  
For Change



Superior  
Professionals



Compassion



## NURSES

- ✓ CU, CCU, NICU, PICU, TICU.
- ✓ Labour Room, Ob/Gynae.
- ✓ Post-Partum / Nursery, Antenatal/ Post-natal.
- ✓ Accident and Emergency, Trauma.
- ✓ Oncology / Medical & Surgical, Radiology.
- ✓ Emergency Room / O.T./ Recovery Room.
- ✓ Dialysis & Transplantation, Nephrology.
- ✓ Pediatric.
- ✓ Ortho / Neuro / Urology.
- ✓ Nuclear Medicine.
- ✓ Rehab & Psychiatry.
- ✓ ENT, Dermatology, Geriatrics.
- ✓ OPD, Nurse Aide, Nurse Technician.
- ✓ Post Anesthesia Care Unit.
- ✓ Lithotripsy.
- ✓ Ortho / Neuro / Urology.



## PARAMEDICAL

- ✓ Lab Technicians.
- ✓ Cath Lab Technicians.
- ✓ Radiology Technicians.
- ✓ X-Ray/O.T. Technicians.
- ✓ ECG/EEG Technicians.
- ✓ Dialysis Technicians.
- ✓ EMS/ Ambulance Technicians.
- ✓ CSSD Technicians & Supervisors
- ✓ Dietician/ Dietetic Co-ordinator.
- ✓ Respiratory Therapists.
- ✓ Dental Hygienist & Technicians.
- ✓ Occupational Therapists.
- ✓ Echo Technologist.
- ✓ Anesthesia Technician.
- ✓ Shift Co-ordinator.
- ✓ Medical Transcriptionist.
- ✓ Research Co-ordinator.
- ✓ Trauma Database Analyst.
- ✓ Audio & Speech Therapist.
- ✓ Physiotherapists.
- ✓ Clinical Scientist.
- ✓ O.T. Manager.
- ✓ Bio Medical Technicians.
- ✓ Medical Manager.
- ✓ Prosthetics & Orthotics Technicians.

# Affiliated to Test and Skill Center

**WHERE POTENTIAL CANDIDATES ARE GROOMED,  
TESTED AND EQUIPPED WITH REQUISITE SKILL SETS.**

We are affiliated to Skill Centers and Testing Academy where the personnel is groomed, tested with real environment and working conditions. These centers offer parameterized testing with quality of work along with productivity. This assures that the candidate is skilled at par with global standards.



Specimen of certificate on completion of trade test  
- authentic and fake-proof



## FOLLOW SAFETY NORMS

All the candidates follow adequate & industry-mandated safety measures.



## LATEST TOOLS

The candidates are tested by making them work with latest tools and equipments

# CATEGORIES / INDUSTRIES WE SERVE



HEALTHCARE



FACILITIES MANAGEMENT



CONSTRUCTION



DESIGN ENGINEERING



INFORMATION  
TECHNOLOGY



OIL & GAS



INDUSTRIAL



ENGINEERING



BANKING & FINANCIAL  
SECTOR



FMCG



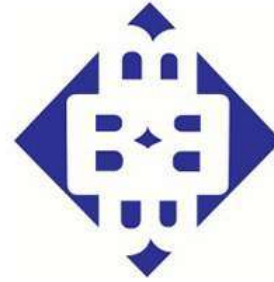
HOSPITALITY

# List of Our Clients

SERVED WITH PRIDE. THEIR TRUST IS OUR SUCCESS.



مدرسة الأمانة الخاصة  
Al Amana Private School



# Contact Details

**INDIA**

---

**MUMBAI**

601,Range Heights, New Link Road, Kajupada Junction, Oshiwara, Jogeshwari (W), Mumbai - 400 102.

 **+91 (022) 26313172**

 **workforcehr@workforcehrllp.com**

 **workforcehrllp.com**

 **workforcehrllp@gmail.com**





WORKFORCE HR LLP