

# POLE SHELVING SYSTEM

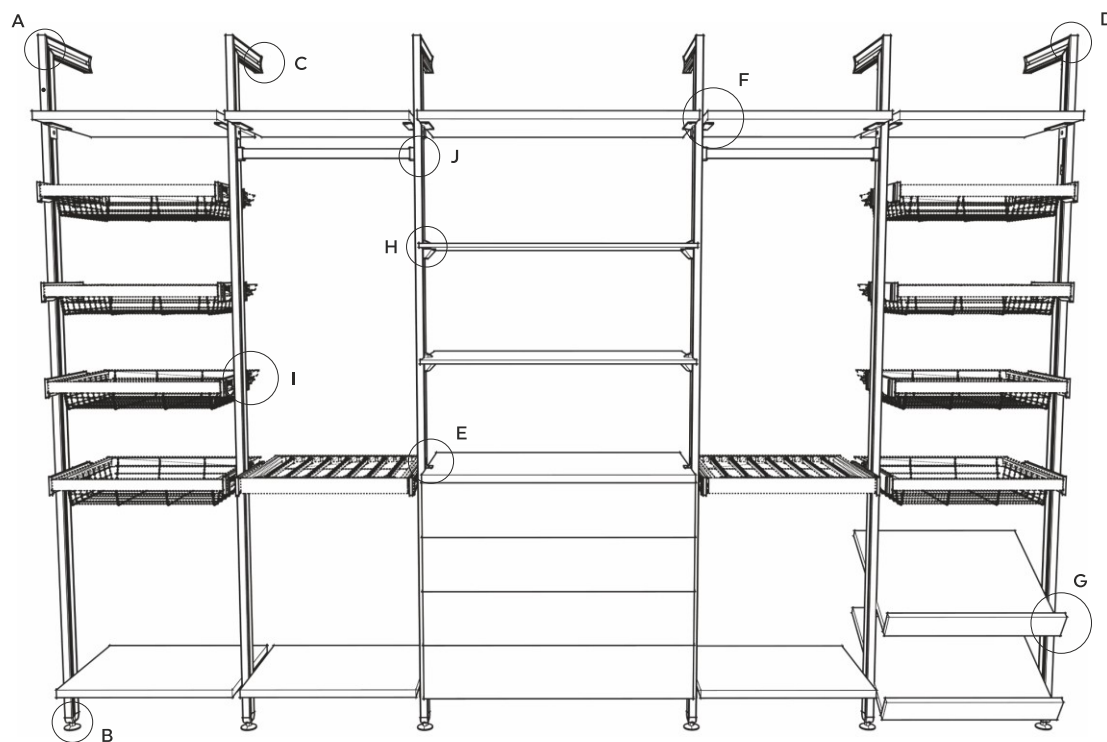
## Special Features

- A sophisticated shelving system minimal by design, versatile and exceptionally flexible.
- Wide range of adaptors, brackets, shelves, cabinets, hangers and Pullout drawers makes it a designer's choice due to its functionality.
- Highly flexible design enables to change the combination/ layouts of display without actually removing the entire unit.
- These can be mounted from floor to ceiling or floor to wall as high up to 3 meters.
- Thoughtfully designed aluminum section for concealed wires that enables the addition of light fixtures, television sets, music systems, desktop, computers and other devices that need electric power on the pole shelving units.



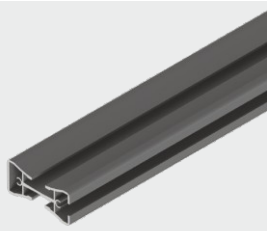
## Specifications

Item	Code Nos.	Load Capacity	Finish
Aluminium Section	PPDS-ALS	1000kg compression vertically / feet section	AN/AS/CH/GF/SF
Height Adjustable Plinth	PPDS-HAP	800kg / plinth	SL/BR/CH/GF/SF
End Connector Set	PPDS-ECS	-	SL/BR/CH/GF/SF
Right Angle Connector	PPDS-RAC	-	SL/BR/CH/GF/SF
Small Shelf Support	PPDS-SSS	10kg / set	SL/BR/CH/GF/SF
Big Shelf Support	PPDS-BSS	20kg / set	SL/BR/CH/GF/SF
Tilting Shelf Bracket	PPDS-TSB	10kg / set	SL/BR/CH/GF/SF
Adjustable Glass Shelf Support	PPDS-AGS	10kg / set	SL/BR/CH/GF/SF
Concealed Slide Adaptor	PPDS-CSA	25kg / set	SL/BR/CH/GF/SF
Rectangular Rail Support	PPDS-RRS	20kg / set	SL/BR/CH/GF/SF

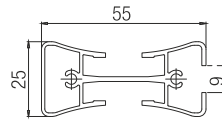


# POLE SHELVING SYSTEM

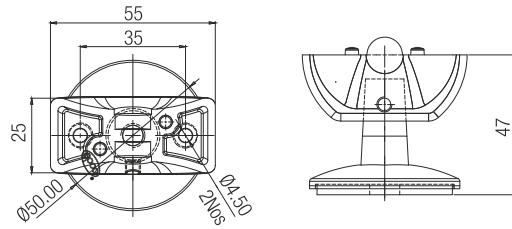
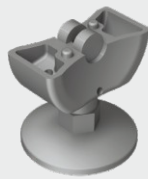
**A** Aluminium Section



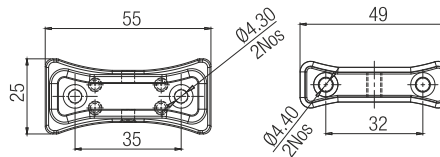
LENGTH : 3 METER



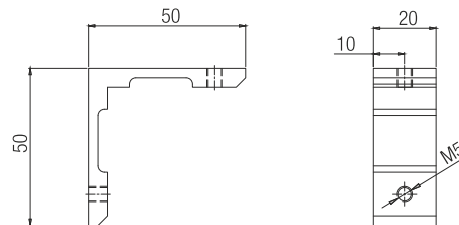
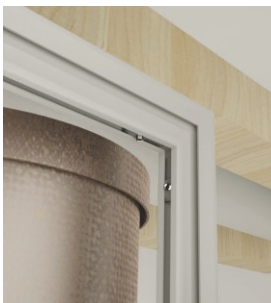
**B** Height Adjustable Plinth



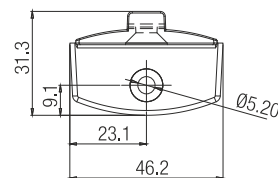
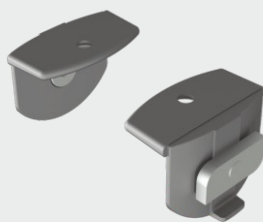
**C** End Connector Set



**D** Right Angle Connector

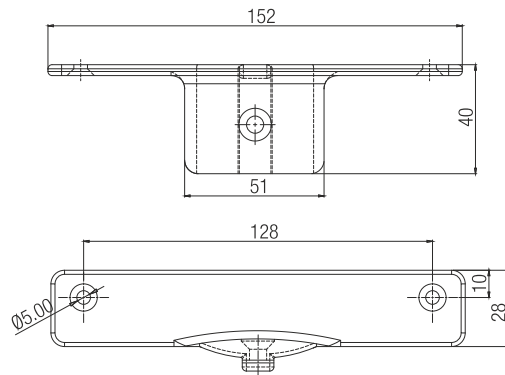


**E** Small Shelf Support

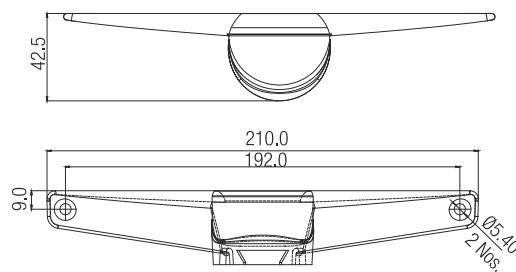


# POLE SHELVING SYSTEM

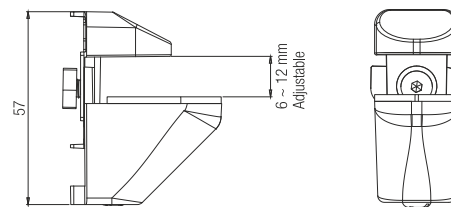
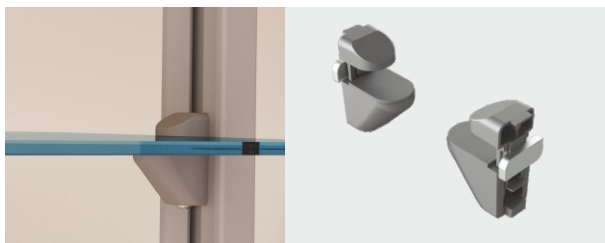
**F** Big Shelf Support



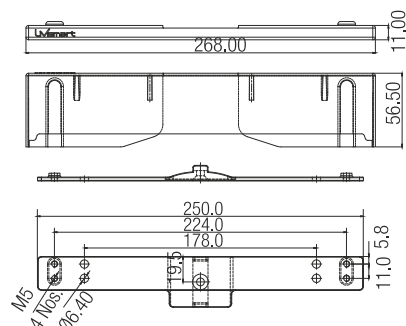
**G** Tilting Shelf Bracket



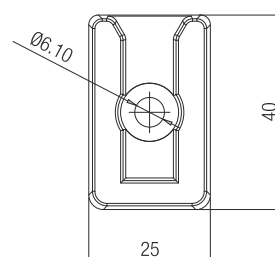
**H** Adjustable Glass Shelf Support



**I** Concealed Slide Adaptor



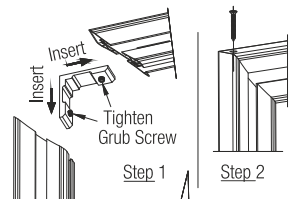
**J** Rectangular Rail Support



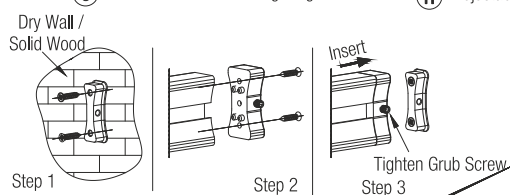
# POLE SHELVING SYSTEM



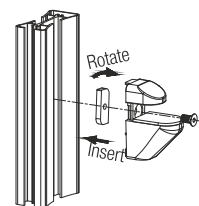
**D** Right Angle Connector with Aluminium Section Fitting Diagram



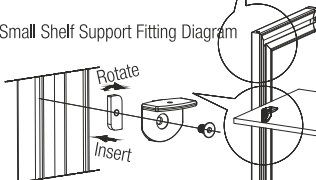
**C** End Connector Set Fitting Diagram



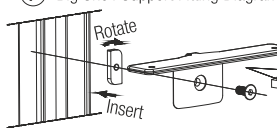
**H** Adjustable Glass Shelf Support Fitting Diagram



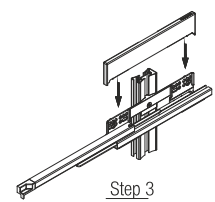
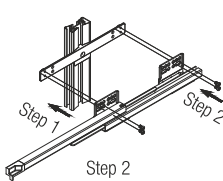
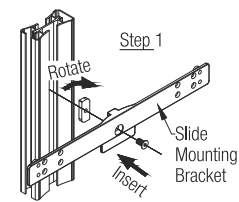
**E** Small Shelf Support Fitting Diagram



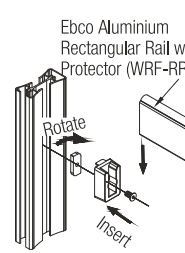
**F** Big Shelf Support Fitting Diagram



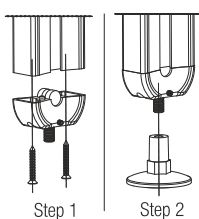
**I** Concealed Slide Adaptor Fitting Diagram



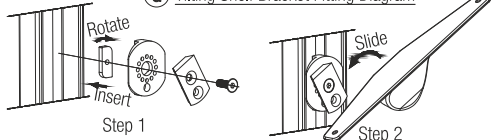
**J** Rectangular Rail Support Fitting Diagram



**B** Height Adjustable Plinth Fitting Diagram



**G** Tilting Shelf Bracket Fitting Diagram



CONCEALED SLIDE ADAPTOR WITH WARDROBE PULLOUT BASKETS

