



ISB Linear Systems Center

Channel Partner

METASYS

Telephones – 022-23430118 / 9821217472

Email : metasys@live.com

ISB Linear Systems Center

The new ISB Linear System Center of ISB Group - Italy



ISB Linear Systems Center

Fully operating shop floor where linear products are being machined



ISB Linear Systems Center figures (on a yearly basis)

- 150 Km of cut rails
- 8.000 joint rails
- 5.000 machined ball screws
- 50.000 machined shafts

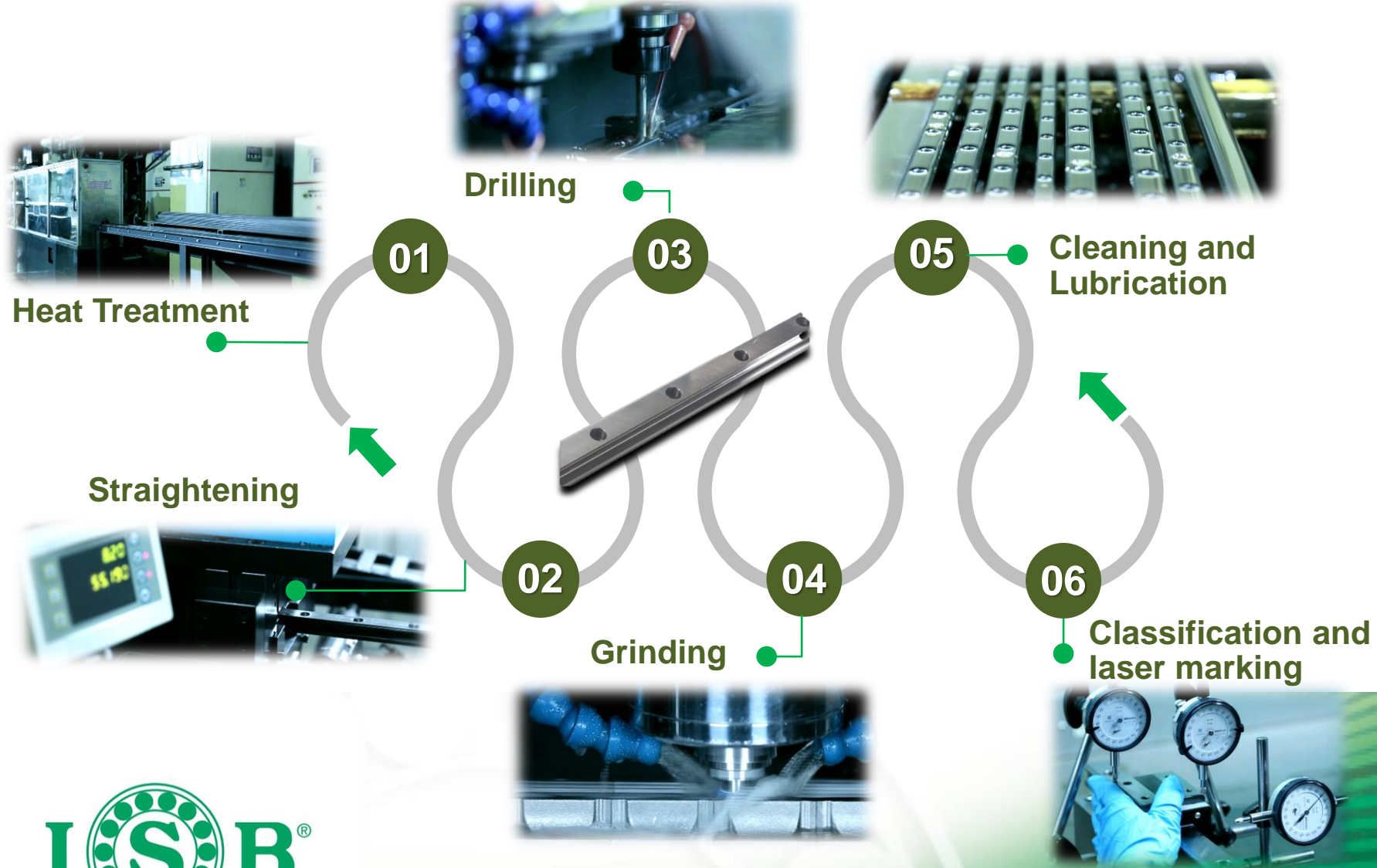
Factories in Asia



Affiliated factories owned by the ISB Linear Systems Center - TRM

Factories in Asia – Production process (rails)

Affiliated factories owned by the ISB Linear Systems Center - TRM



Factories in Asia – Production process (blocks)

Affiliated factories owned by the ISB Linear Systems Center - TRM



Ultrasonic
cleaning



Assembly

SEMI-FINISHED GOODS

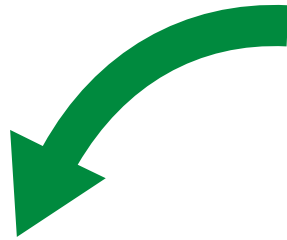
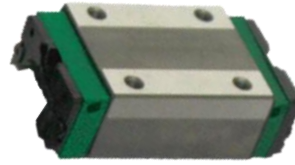
Grinding raceways
and datum



Selection and laser marking

FINISHED PRODUCT

Performances always top of mind



Sealing Test in harsh environment



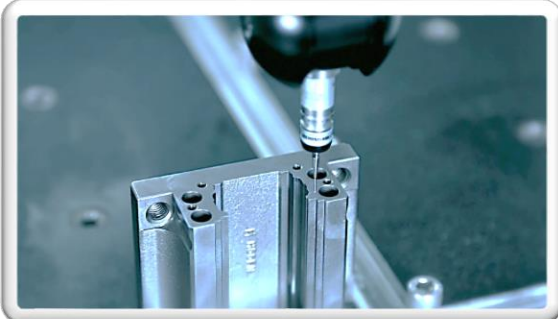
Loading Test



Noise test

Quality Inspection Control (QIC)

100% of products inspected



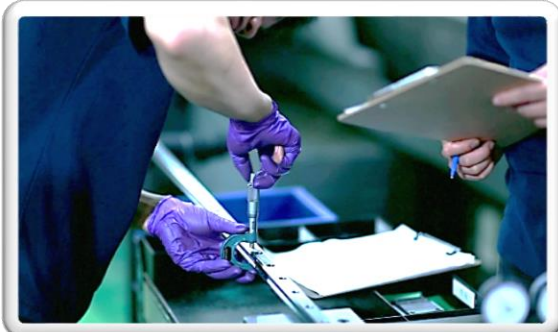
Raceways roughness inspection



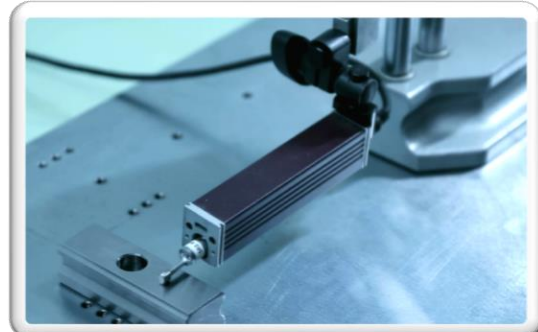
Materialographic Tests



End-of-line inspections



Rail top surface roughness inspection



Hardness Test



Product Range and Accessories

Some technical and commercial hints



LINEAR SYSTEMS CENTER

Linear Motion Product Range

- Linear guides and blocks from size 15 to size 45
- Rails in full length 4000 mm as well as cut length available as per customers requirements.
- Ex Stock, Mumbai.



A WIDE RANGE OF SOLUTIONS

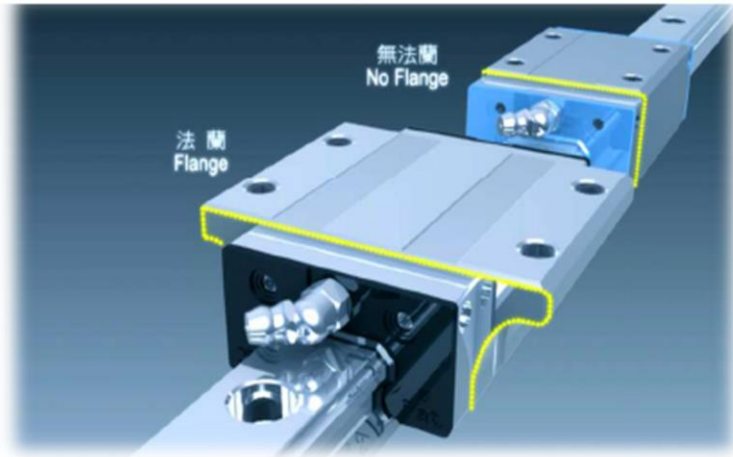
LINEAR GUIDES AND BLOCKS



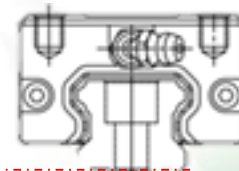
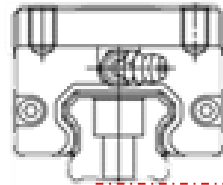
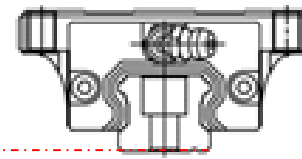
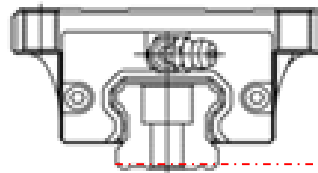
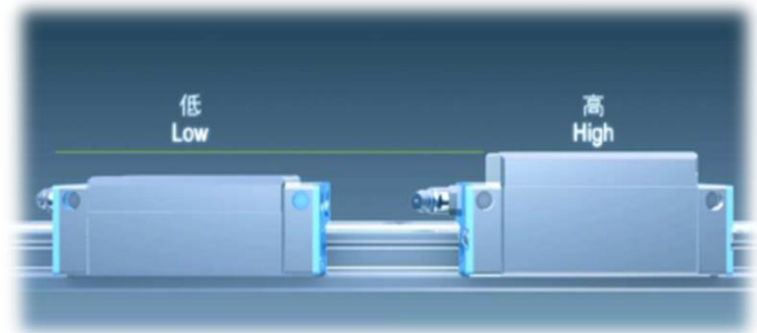
LINEAR SYSTEMS CENTER

Main block versions

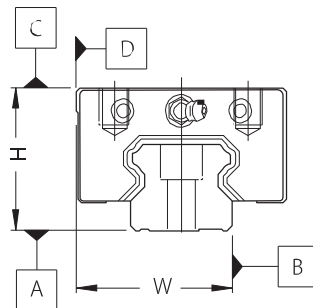
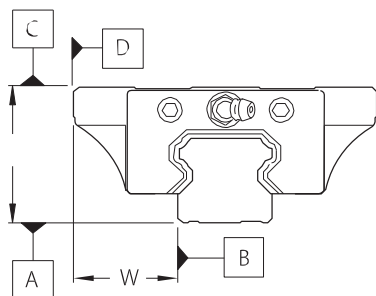
FLANGED AND STANDARD



HIGH AND LOW ASSEMBLY



Accuracy



Classe Parametro	Normale (N)	Alta (H)	Precisa (P)	Super Precisa (SP)	Ultra Precisa (UP)
Tolleranza su altezza (H)	± 0.1	± 0.04	$\begin{matrix} 0 \\ -0.04 \end{matrix}$	$\begin{matrix} 0 \\ -0.02 \end{matrix}$	$\begin{matrix} 0 \\ -0.01 \end{matrix}$
Tolleranza su larghezza (W)	± 0.1	± 0.04	$\begin{matrix} 0 \\ -0.04 \end{matrix}$	$\begin{matrix} 0 \\ -0.02 \end{matrix}$	$\begin{matrix} 0 \\ -0.01 \end{matrix}$
Differenza di altezza (ΔH)	0.03	0.02	0.01	0.005	0.003
Differenza di larghezza (ΔW)	0.03	0.02	0.01	0.005	0.003
Deviazione piano vs. piano	ΔC				
Deviazione piano vs. piano	ΔD				

Grado	Codice	Grandezza (C=capacità dinamica)
Gioco ridotto	ZF	0
Gioco 0	Z0	0
Precarico medio	Z1	0.02C
Precarico elevato	Z2	0.05C
Precarico massimo	Z3	0.07C



LINEAR SYSTEMS CENTER



Metasys

OFFICE NO 39, 3rd FLOOR, 152 NARAYAN DHURU STREET, MUMBAI

PIN CODE- 400003. MAHARASHTRA. INDIA

TELEPHONES - 022-23430118 / 30116365. CELL - 9821217472

EMAIL- metasys@live.com



LINEAR SYSTEMS CENTER