



**114/F, SOUTH MASI STREET, MADURAI-625001, TAMIL NADU, INDIA**



# Contents



- Vision
- Mission
- Values
- Product Range
- Certification
- Sustainability
- Manufacturing Facilities



# Vision



**TO ATTAIN MARKET LEADERSHIP THROUGH SUPPLYING TOP QUALITY PRODUCTS AND SERVICES, AND TO GLOBALIZE OUR PRODUCTS AND SERVICES ALL OVER THE WORLD MAP.**

**- FAZAL MOHAMED YUSUF**  
**(MANAGING PARTNER)**

---



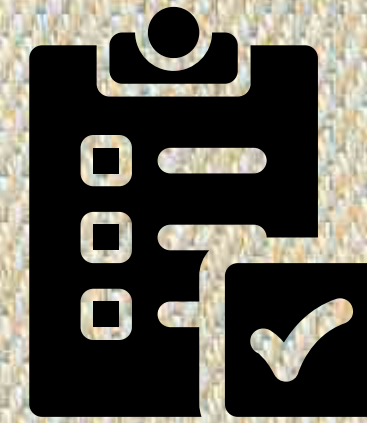
# Mission



**To acquire the highest level of customer satisfaction through timely deliveries and outstanding quality products.**



**To sustain long term business relationships**



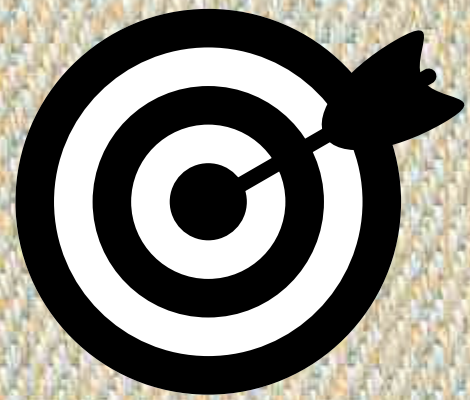
**To provide comprehensive sourcing of quality management services.**



**Delivering the best at the best competitive price.**



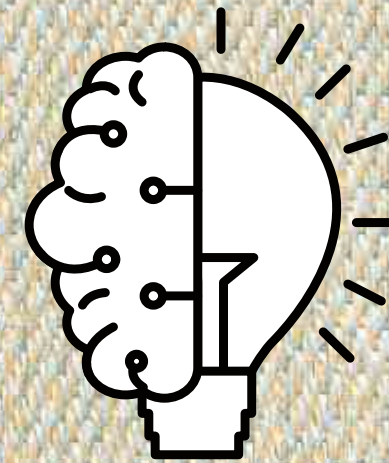
# Values



**To achieve company  
Goals by working  
Ethically &  
Sustainably**



**To be Passionate &  
Ambitious about our  
Standards of  
Performance**



**To be Innovative & to  
embrace Kaizen  
through Practice**



**To always maintain  
our Integrity,  
Reputability and  
Honesty**



# Product Range



## Wovens

- **100% Cotton & Cotton Blends Fabric**

Particulars	Values
GSM Range	75 to 250
Yarn Counts	10's to 80's
Structures	Plain, Twill, Dobby, Oxford, Herringbone
Width Options	48" to 69"

## Warp Knits

- **Synthetic Fabric**

Particulars	Values
GSM Range	15 to 320
Gauge	24 to 40
Guide Bar	3 & 4
Structures	Tricot, Power Net, Weft Lock, Raschel
F. Width Options	48" to 70"



# Certifications



**GOTS (Global Organic Textile Standards)**



**GRS (Global Recycled Standard)**



**Oeko-Tex**



**BCI (Better Cotton Initiative)**



**ISO 9001: 2015 / ISO 14001: 2015 / ISO 45001: 2018  
(International Organization for Standardization)**



# Sustainability



**We care.**

- Our Sizing plant now runs **100% on Renewable Energy.**
- Our Dindigul Weaving plant is **100% Wind powered.**
- Our Warp Knit plant is powered by **100% Renewable Energy.**
- Waste water in our Processing unit is **Recycled and Reused.**





# Manufacturing Facilities



## Warp Knits

**Total Number of Warp Knit Factories - 1**

**Location - Surat**

<b>Number of Machine</b>	<b>Guide Bars</b>	<b>Gauges</b>	<b>Per Day Capacity(Mts)</b>	<b>Per Month Capacity (Mts)</b>
60	3 & 4	24/28/32/36/40	150,000	3,900,000

<b>Machine Brand</b>	<b>No. of Machines</b>
Karl Mayers	36
Liba	24



# Images & Videos





# Manufacturing Facilities



## Woven

**Total Number of Woven Factories - 3**

**Location - Madurai, Dindigul, and Erode**

<b>Number of Machine</b>	<b>Per day capacity(Mts)</b>	<b>Per Month Capacity(Mts)</b>	<b>Machine Brand</b>
62	21700	650,000	Toyota Airjet looms



# Images & Videos







**TAYUB  
TEXTILE**  
HOUSE OF FABRICS

114/F, SOUTH MASI STREET, MADURAI-625001, TAMIL NADU, INDIA