



JK SYSTEM
a moments of fixing all..



JK-WA-007



Advantages

Classical Structure Design

Brand new camera beam design makes the entire structure of the alignment system rational and grand. Versatile structures are optional.

Golden Eyes

Superior lens can adapt to strict outside environment and filtrate the stray light with wider angle to capture and read the target disks appropriately.

High-resolution Camera

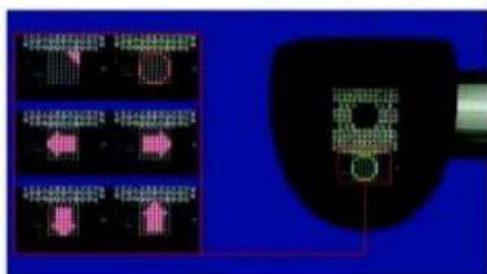
With two imported high-resolution cameras and the fast and stable central computer system, transmission of the picture can reach 15 frames per second to make the measuring result be displayed continually.

Target Disk

Target disks are made of special materials which will not be broken even falling from 10 meters high. The reflection materials with superior engineering film can last longer working life.



Double-displaying System & Outstanding Functions



Intelligent LED Guide :

With special design, flashing LED lamps offer dynamic feedback during measuring and monitor the measurement processes effectively.

JK-WA-005

Functions and Configuration:

- Four-point Wheel Clamps
- High-precision Target Disk
- 3D-tech Compensation
- Toe/ Camber Measurement
- Imported Precision Camera
- Adjustable Camera Bar Angle
- Body Dimension
- Caster & S.A.I.
- Drive-on Camera
- Intelligent Voice-over/ 32" LCD
- M3 equipped with 21"LCD



JK-WA-006

3D-tech Compensation:
Only one moving forward and backward can finish comprehensive compensation for errors caused by deformed rims or installation.

Four Wheels Reference Display:
Toe, camber and their differences can be displayed on the screen simultaneously.

Front/ Rear Wheel Reference Display:
The front and rear wheel reference can be displayed simultaneous adapting to different operators' requirements.

Voice-over System:
Advanced automotive voice-over will guide every step of wheel aligning operation.

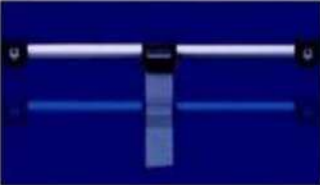
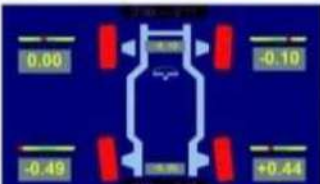
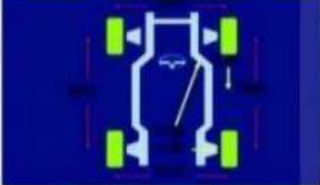
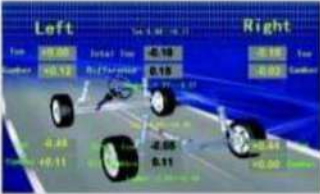
Body Dimension:
Unique 3D alignment body measurement system can measure chassis parameters, such as wheelbase, track width and axle offset .

Caster/ S.A.I. Measurement: Simultaneous measurement of caster, S.A.I. and inclusive angle can diagnose the acceleration off-tracking, the weight of steering wheel boosting and other factors.

Four Wheels Toe/ Camber Display:
The data of toe and camber for four wheels can be displayed simultaneous on the screen to provide effective reference.

Drive-on Camera:
Special mirror function of the PC camera can guide the best parking position on the platform effectively.

Controllable Lifting Pole:
In the process of operating, the pole can be adjusted up to 2.1 meters according to the height of vehicle at any time with a remote.



WHEEL ALIGNMENT

M GRADE SENSOR



M GRADE SENSOR



FEATURES

- Measuring 5 bluetooth wireless matrix communication
- High Pixels CMOS Toe sensor with DSP system get up to 0.008 resolution.
- Artificial intelligence with Java software
- Include English, Russian, Spanish and other language versions for different users.
- F5 key to quick camber/toe and caster/sai measurement
- Chassis measuring ultra-low-angle. take without synchronization of the program, measure any "super-low" type of car.
- Especially design for Audi A6/Passat B5 quadratic curve adjustment function.
- Using high-precision electronic instrument.
- A database compos of more than 20,000 car models free upgrade for lift.
- Trickle line principle assures steering wheel level after alignment
- Diagnostic run out compensmation(ROC)
- Zero adjustment to adjust wheel alignment angles to zero regardless the specification.
- User friendly 3D graphic interface it is simply pushing on four command keys displayed on the screen that guide him step by step in the measuring.
- Display/Print customer's shop name, Logo and promotion message.

SPECIFICATIONS

Item	FRONT WHEELS		REAR WHEELS	
	Measure Accuracy	Measure Range	Measure Accuracy	Measure Range
Toe	± 2'	± 6	± 2'	± 6'
Individual	± 1'	± 3	± 1'	± 3'
Set Back	± 2'	± 6	± 2'	± 6'
Camber	± 2'	± 10	± 2'	± 10'
SA	± 5'	± 22	± 5'	± 22'
Caster	± 6'	± 15	-	-
Thrust Angle	-	-	± 2'	± 6'

WHEEL BALANCER

JK-WBV-0012



FEATURES

- Video Graphic LCD Display
- Automatic Start/Stop
- Self diagnosis
- Self calibration
- Interchangeable between grams and ounces
- Interchangeable between millimeters and inches
- Protection cover
- 5ALU functions for light alloy wheels
- Full display for a. b. d. reading

SPECIFICATIONS

Power Supply	:	220V1Ph 50 Hz
Motor Power	:	185~320W
Minimum Rim Diameter	:	10"(255mm)
Maximum Rim Diameter	:	24"(615mm)
Minimum Rim Width	:	1.5" (40mm)
Maximum Rim Width	:	20" (510mm)
Balancing Precision	:	±1g
Balancing Speed	:	≤190r.p.m
Max Wheel Weight	:	70Kg





WHEEL BALANCER

JK-WB-0010



FEATURES

- Automatic Start/Stop
- Automatic distance and wheel diameter measuring
- Self diagnosis
- Self calibration
- Interchangeable between grams and ounces
- Interchangeable between millimeters and inches
- Protection cover
- 5ALU functions for light alloy wheels
- Full display for a. b. d. reading

SPECIFICATIONS

Power Supply	:	220V1Ph 50 Hz
Motor Power	:	185~320W
Minimum Rim Diameter	:	10"(255mm)
Maximum Rim Diameter	:	24"(615mm)
Minimum Rim Width	:	1.5" (40mm)
Maximum Rim Width	:	20" (510mm)
Balancing Precision	:	±1g
Balancing Speed	:	≤190r.p.m
Max Wheel Weight	:	70Kg
Noise	:	<70dB



TYRE CHANGER

JK-TC-0015

- With tilting column, pneumatic locked at optional position
- Inside and outside of clamps totally protected by plastic guards to prevent damage to the most delicate rims
- Turntable with two pneumatic cylinders
- Manually-operated tilting arm support column with high tensional rigidity in all working positions
- M/D Head with interchangeable plastic parts to protect rims
- Bead breaking unit with pneumatic cylinder
- Ergonomic pedal control unit to make the working procedure quicker and safer
- Manometer for inflating pressure control equipped with deflating push button

SPECIFICATIONS

Power Supply	: 220V 50Hz
Motor Power	: 0.75 ~ 1.1KW
Bead-remove cylinder	: 2500Kg
Operating pressure	: 0.8 ~ 1MPa
Rim diameter	: 255 ~ 560mm(10" ~ 22")
Rim Width	: 76 ~ 410mm(3" ~ 16")
Max wheel diameter	: 1000mm
Noise	: < 70dB
Package Size	: 1200*1040*1100mm



TYRE CHANGER

JK-TC-0014

- Swing arm and semi-automatic style
- Operate the mounting/demounting work manually
- Plastic front cover
- Strong pneumatic bead breaker
- ATV and motorcycle adapter is optional to handle tire from 6" to 26"
- Modern appearance and excellent performance
- M/D Head with interchangeable plastic parts to protect rims

SPECIFICATIONS

Power Supply	: 220V 50Hz
Motor Power	: 0.75~1.1KW
Bead-remove cylinder	: 2500Kg
Operating pressure	: 0.8~1MPa
Rim diameter	: 255~560mm(10"~22")
Rim Width	: 76~410mm(3"~16")
Max wheel diameter	: 1000mm
Noise	: <70dB
Package Size	: 970*770*900mm






JK SYSTEM
a moments of fixing all...

SYSTEM





JK SYSTEM
a moments of fixing all...

N²

**AUTOMATIC NITROGEN
TYRES INFLATOR**





Hydraulic Floor Jack	
Model No.	Lifting Capacity
• HFJ-2T	2Ton
• HFJ-2.5T	2.5Ton
• HFJ-3T	3Ton
• HFJ-4T	4Ton



SYSTEM

JK SYSTEM

Engine Decarbonising Expert

Mode	Specification	
PX-CCM-HY-E	Input Voltage	220/380V ±10%,50/60Hz, three phases
	Rated Capacity (KVA)	2.5,3,4,5
	Working Gas Pressure (Mpa)	≤0.09
	Relative Humidity (%)	90
	Rated Gas Production (L/h)	900 to 1500
	Water Consumption (L/h)	0.54
	Carbon cleaning for motorcycle and car	(0.6-1.5 liters),Time Set:20-30mins
	Cooling Mode	Water Cool
	The Insulation Level	F
	Power Supply Protection Grade	IP21S
	Working Medium	Filtered water, deionized water or soft water
	Working Method	Continuous
	Environment Temperature (°C)	0~50
	Outline Dimensions - L*W*H (mm)	762.0×609.6×762.0
	Gross Weight (kg)	Upto 150
Ventilation Space Requirement (mm)	400 in each direction	



Carbon deposition hazards:

Engine shake
 Inability to drive
 Bad acceleration
 Cold start difficulties
 Increased gasoline fuel consumption
 High oil consumption
 Engine scrap
 Shortening the spark plug, the catalytic lifetime of the oxygen sensor
 Premature combustion
 Gas valve

Two: The use of automotive hydrogen and carbon removal machine is remarkable:

1. Lift power: 10%~30%
2. Save fuel: 10%~15%
3. Lower emissions: 50%

Three: The advantages of hydrogen and carbon removal machine:

1. It is free from manual dismantling and the usage rate is very high, except the carbon time is 20~30 minutes.
2. Because it is hydrogen, it will not damage the vehicle engine oil, oil seals, gaskets and engine
3. No disassembly, environmental protection and new energy, no pollution, is the representative of the national energy-saving emission reduction

Hot Tags: HHO carbon cleaning car engine decarbonising machine, China, manufacturers, buy, discount, quotation, in stock



JK SYSTEM



SYSTEM

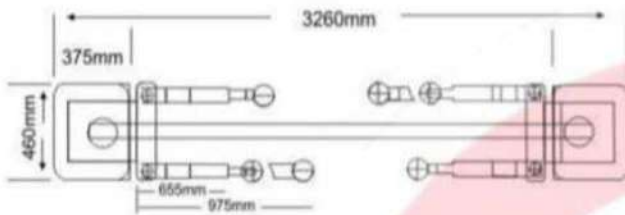


TWO POST LIFT

JK-TPBP-001



OVERALL STRUCTURE SIZE (mm)



SPECIFICATIONS

Model	JK-TPBP-001
Lifting Capacity	3.5 Ton
Lift Height	1700 mm
Rise Time	50s
Drop Time	20s
Power of Motor	2.2KW
Power Supply	440v/220v
Width of the Rack	3260mm
Height of the Rack	2725mm
Width between Pillars	2728mm
Net Weight	550Kg./600 Kg.

FEATURES

Double-cylinder, Electro Hydraulic, Two Post Lift is a product of Technomatic. It possesses the characteristics of being simple, stable in operation. With the hydraulic power unit and oil nylon roller structure, it is equipped with a supporting fall-proof safety rack, that is synchronous unit of the rack steel ropes. It also has a locking unit for corbel turning angle. It's easy maintenance and convenient operation make it wonder equipment for the automobile industry.

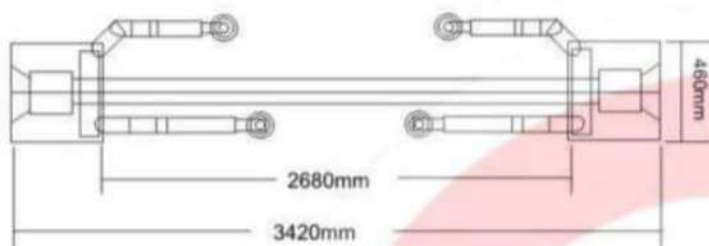


SYSTEM

JK-TPCF-002



OVERALL STRUCTURE SIZE (mm)

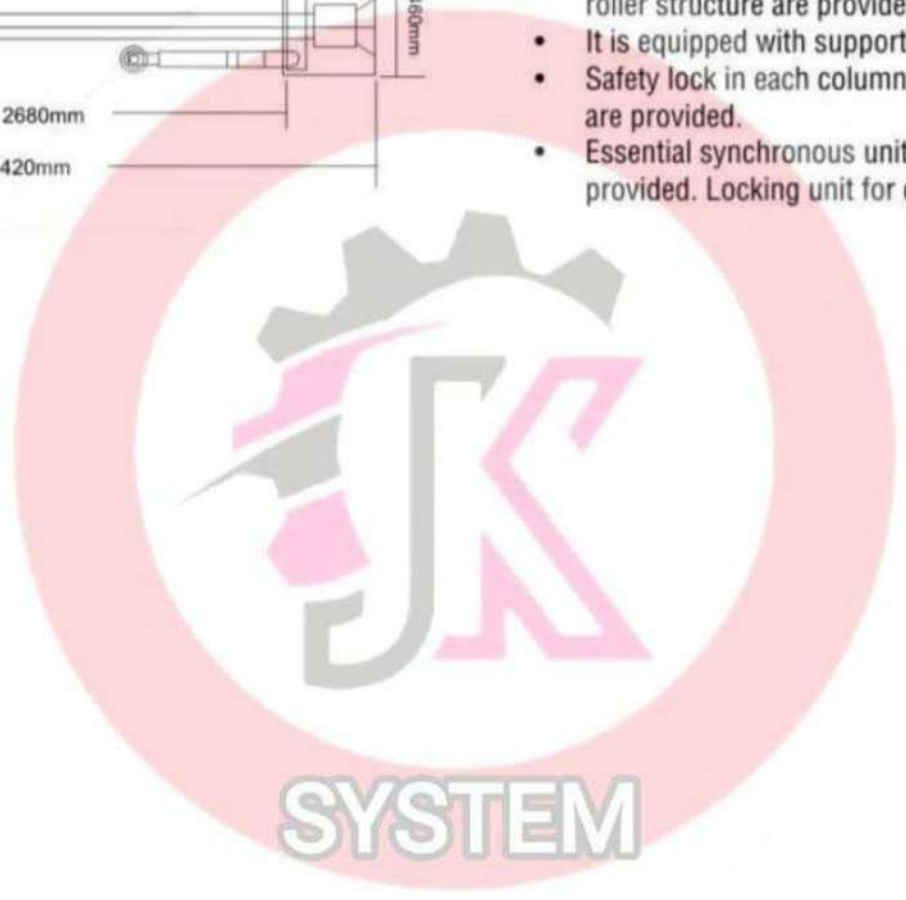


SPECIFICATIONS

Model	JK-TPCF-002
Lifting Capacity	3.5 Ton
Lift Height	1800 mm
Rise Time	50s
Drop Time	20s
Power of Motor	2.2KW
Power Supply	440v/220v
Width of the Rack	3420mm
Height of the Rack	3549mm
Width between Pillars	2800mm
Net Weight	600Kg.

FEATURES

- It has dual hydraulic cylinder, power drive and oil nylon roller structure are provided.
- It is equipped with supporting fall proof safety rack.
- Safety lock in each column to ensure operational safety are provided.
- Essential synchronous unit of rack steel ropes are also provided. Locking unit for corbel turning exist.



FOUR POST LIFT

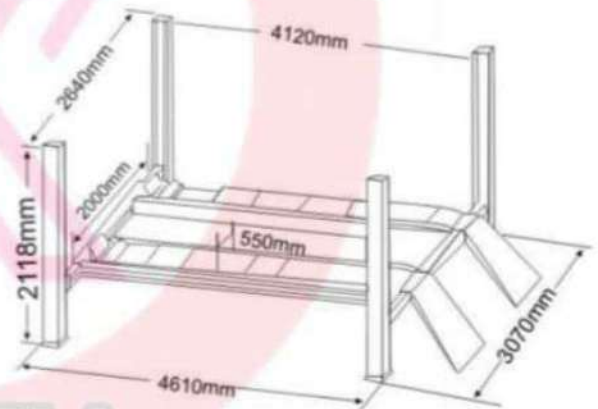
JK-FPL-0023



FEATURES

JK-FPL-0023 is designed for Wheel Alignment, Tyre Changing, Checking & adjustment of wheels. It can also be used for car maintenance jobs. The equipment comes with secondary lifting mechanism which enables the technician to perform the job with ease. It is featured with unique design, well-selected materials, novel appearance and advanced workmanship. It is ideal equipment for maintenance, care, tyre-changing and comprehensive test, check and adjustment of each positioning parameter of the four wheels of all sorts of auto. Secondary lifting mechanism is equipped with automatic / manual device. "Diamond Plate" runway surface have been provided.

OVERALL STRUCTURE SIZE (mm)

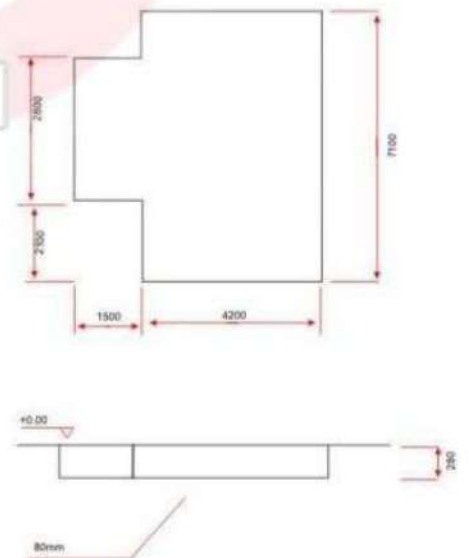


SPECIFICATIONS

Model	JK-FPL-0023
Lifting Capacity	3.5 Ton
Min. Ground Clearance	150 mm
Max. Ground Clearance	1750 mm
Power of Motor	2.2 KW
Power Supply	440 V / 220 V
Hydraulic	N46
Secondary Lift Height	340 mm
Secondary Lift Weight	2000 Kg.
Outer Dimension	4610 x 3070 x 2118 mm
Net Weight	1100 Kg.



SPRAY PAINT BOOTH





S
Y
S
T
E
M

NITROGEN GAS PLANT