

# T H E C O N C E P T B O O K

## 4 BHK LUXURIOUS RESIDENCES



EXCEPTIONAL  
LIFESTYLE

EXCEPTIONAL LIVING, MASTERFULLY DESIGNED  
WITH REFINED AESTHETICS

INTERIOR CAPTURE  
GRACE, BEAUTY, AND SOPHISTICATED

THE PERFECT COMBINATION OF LUXURY  
AND DISTINGUISHED LIFESTYLE

UNVEILING IN  
WEST AHMEDABAD

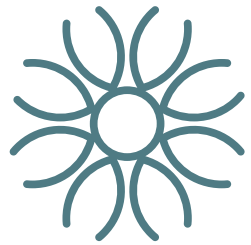
A B O U T | 4 B H K L U X U R Y L I V I N G

LUXURY IS  
THE STATEMENT,  
AN ATTITUDE.

COCO CHANEL



P A N O R A M I C V I E W  
FROM SUNDECK





FUTURISTIC | LIFESTYLE

PRIMARY  
MASTER SUITE



VISUAL REPRESENTATION ONLY





T H E

L O C A T I O N





# THE IDEAL NEIGHBOURHOOD

Nestled at the heart of West Ahmedabad and overlooking Shilaj lake 4 BHK luxury apartments is the place to be.

It embodies the luxury lifestyle, living in a timeless space that has welcomed the global elite for generations.

The booming Sindhu Bhavan Road is a mere 10-minute walk away and hosts world-leading brands, with the famous social infrastructures





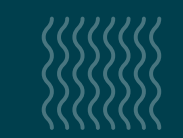
SHILAJ LAKE

SHILAJ CIRCLE

ARYAMAN BUNGLOWS

TAJ SKYLINE

SINDHU BHAVAN MARG



**ACROSS**  
SHILAJ LAKE



**10 MIN**  
SOCIAL INFRASTRUCTURES



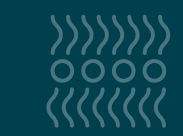
**10 MIN**  
TOP HOSPITALS



**10 MIN**  
TAJ SKYLINE



**26 MIN**  
RAILWAY STATION



**39 MIN**  
AIRPORT

T H E | L U X U R Y I N R E A L I T Y

LIVING  
IN STYLE





M E T I C U L O U S L Y  
DESIGNED PLAN







M A S T E R  
S U I T E



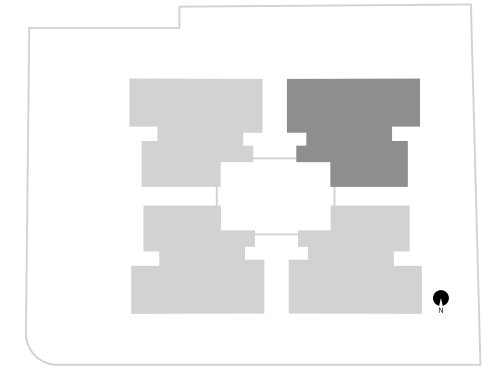
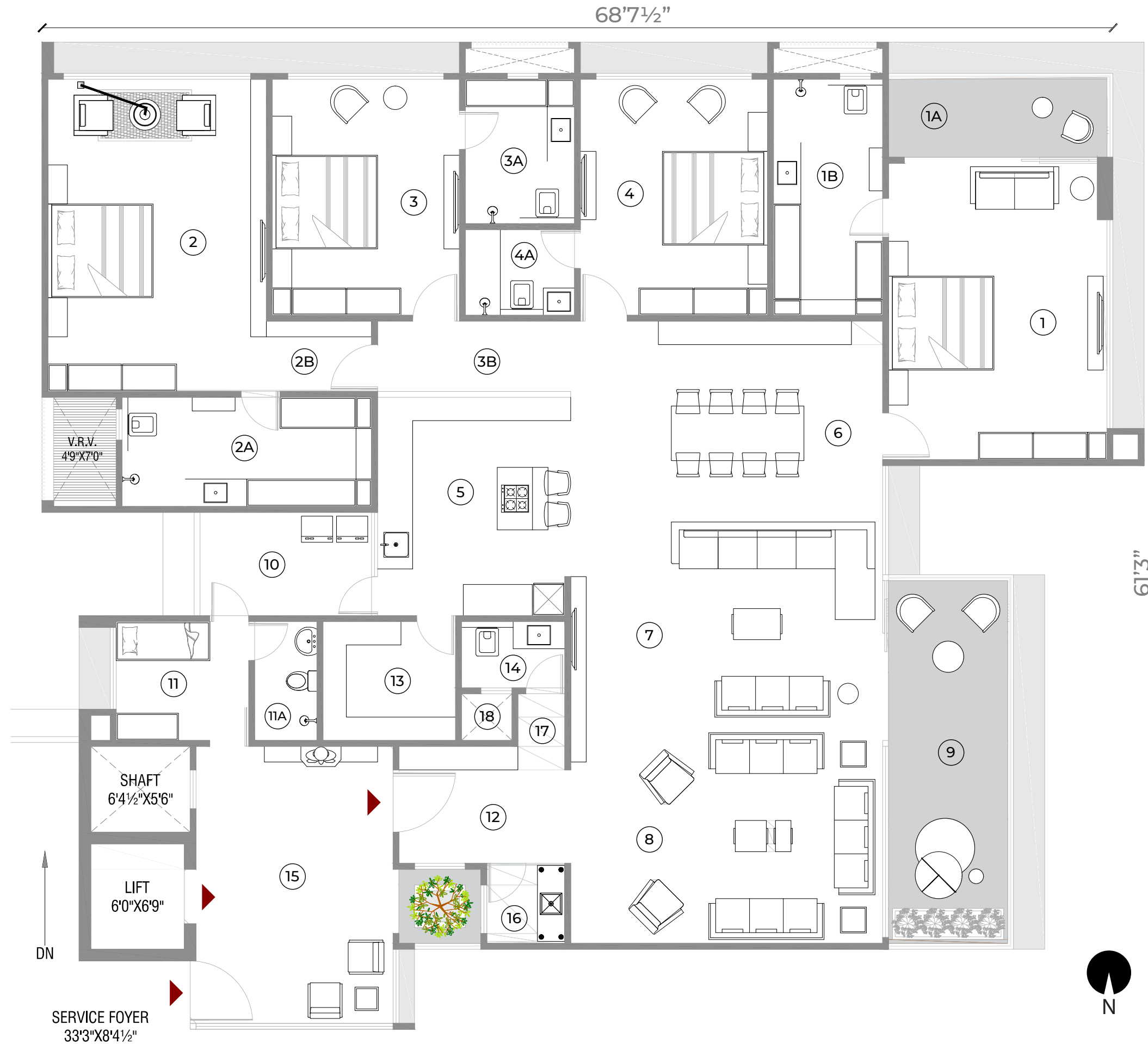


S P A C I O U S  
DELUXE KITCHEN





**4 BHK UNIT**  
Family Apartment  
5700\* SQ FT SBA

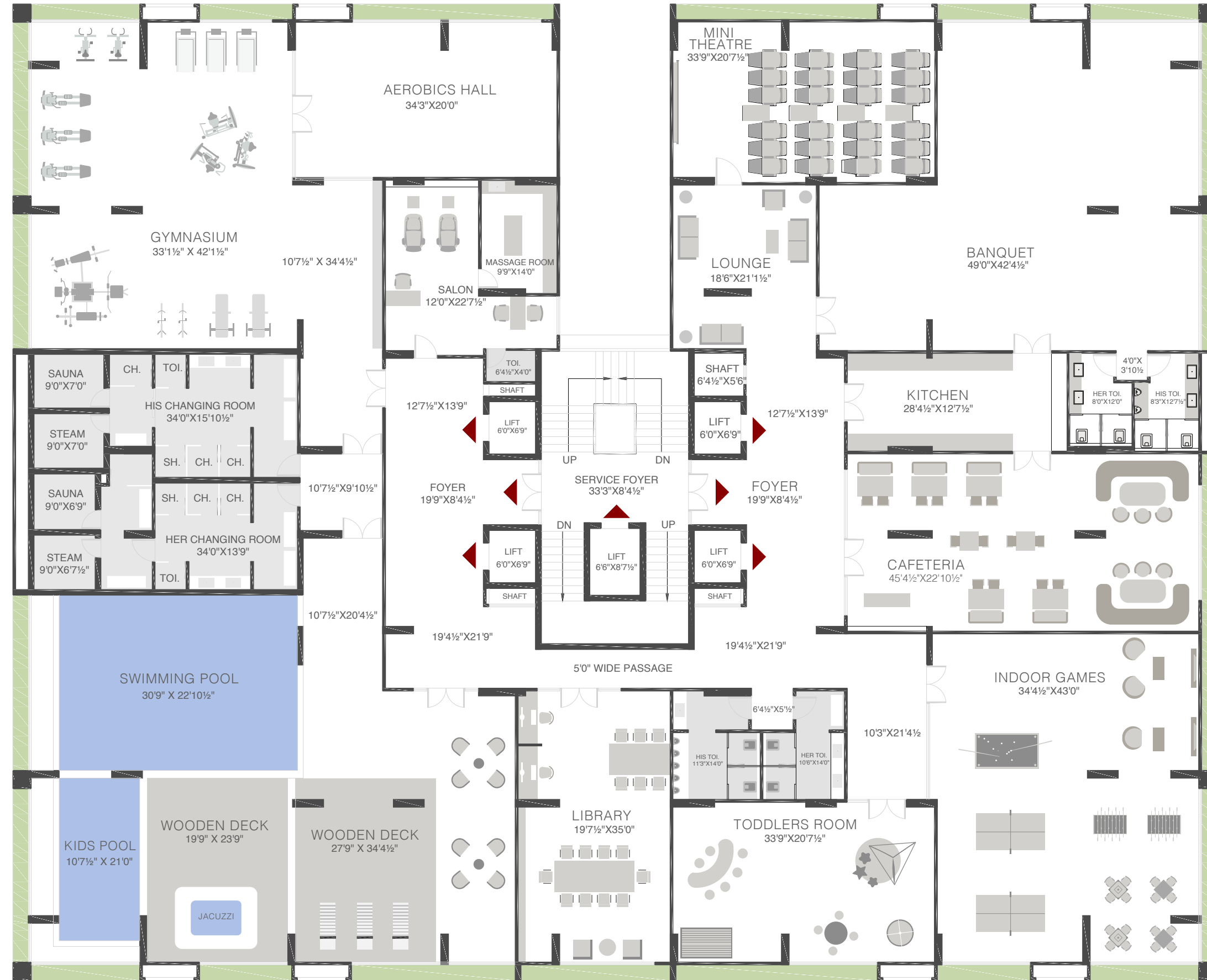


NO	DESCRIPTION	DIMENSION
1	Primary Master Suite	14' X 19'
1A	Sundeck	14'4½" X 5'4½"
1B	Dressing + Bath	7' X 15'1½"
2	Secondary Master Suite	14' X 20'
2A	Dressing + Bath	16' X 7'
2B	Secondary Suite Entry	6'9" X 4'6"
3	Master Suite 1	12' X 9'3"
3A	Master Bath	7' X 5'4½"
3B	Master Corridor	12'4½" X 4'6"
4	Master Suite 2	12' X 15'1½"
4A	Master Bath	7' X 5'6"
5	Kitchen	12'4½" X 14'4½"
6	Dining	20' X 13'10½"
7	Family Living	20' X 13'
8	Formal Living	20' X 13'
9	Sky Patio	8' X 24'
10	Wash Yard	11'0" X 6'7½"
11	Staff Room	8'6" X 7'7½"
11A	Staff Bath	4'0" X 7'7½"
12	Vestibule	11'0" X 7'6"
13	Grain store	8'6" X 7'7½"
14	Guest Bath	6'7½" X 4.3"
15	Personal Foyer	12'7½" X 17'9"
16	Pooja	5'0" X 5'1½"
17		3'0" X 3'4½"
18	Duct	3'3" X 3'
19	VRV	4'9" X 7'0"

# CLUB-CLASS AMENITIES

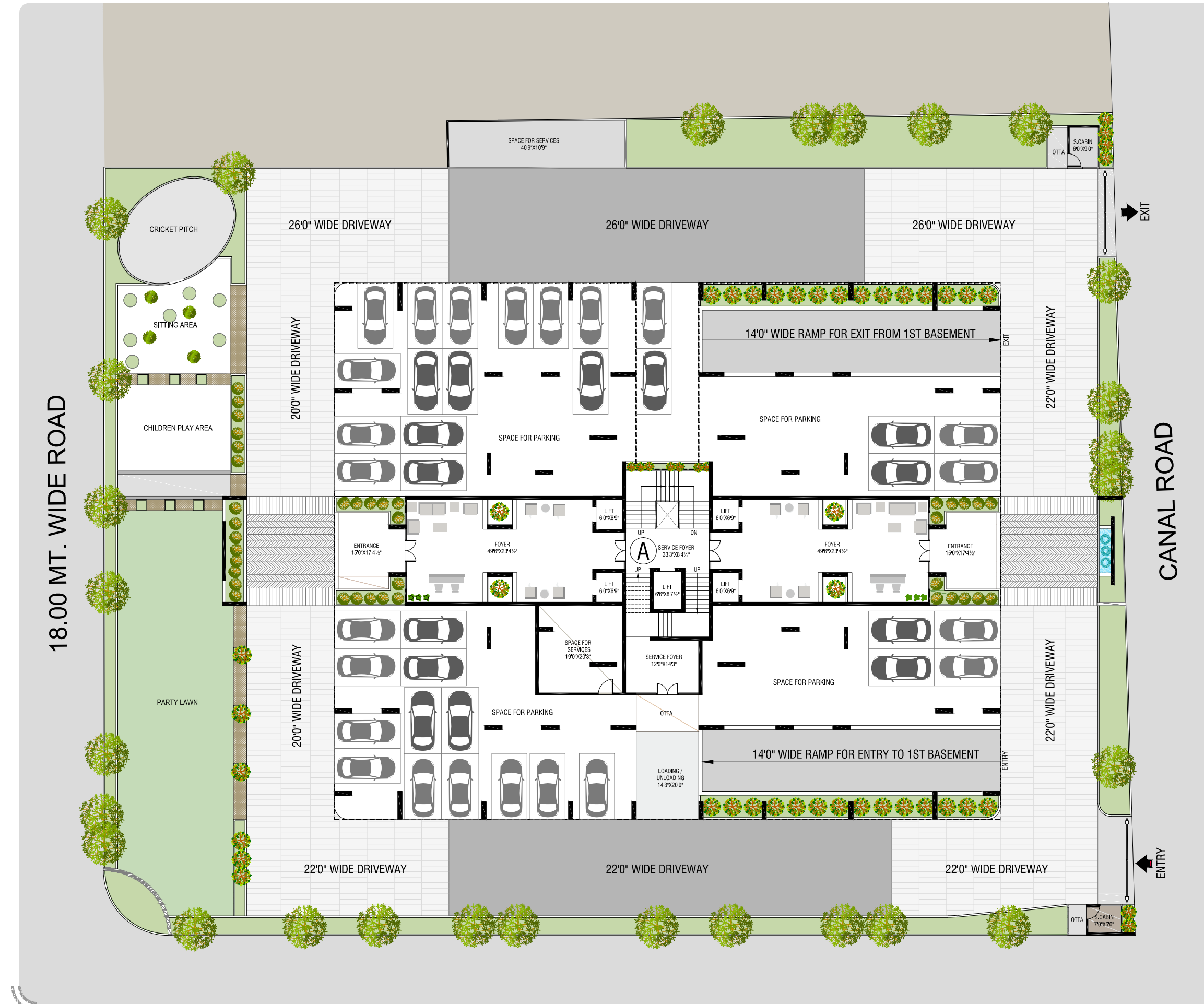
Level 1

27000\* SQ FT SBA



# PARKING

Level -1



# SPECIFICATIONS

---

## KITCHENS (optional)

- Bespoke-designed, gutted kitchens incorporating concealed handle, soft-closing doors, and drawers
- High-quality lacquer and veneered oak cupboard doors
- Dark grey cupboard interior
- Concealed refuse and recycling storage
- Concealed LED lighting to underside overhead cupboards
- Quartz worktops with bronze/mirrored splash-backs

## APPLIANCES (optional)

- Miele single oven
- Miele combination oven, microwave, and grill
- Miele flush-fitting induction hob - 4 zones
- Siemens cooker hood
- Siemens integrated fridge-freezer
- Siemens fully integrated dishwasher
- Siemens fully integrated washer-dryer
- Drinks Cooler in selected kitchens
- Under-mounted sink with deck-mounted Quoter hot tap

## BATHROOMS AND EN SUITES

- Porcelain to second or third master bath – Marble Bianco Ivy Mirrored wall cabinet
- Porcelain, top-mounted hand basins with mixer tap (Twin basins in Master En-suites)
- Concealed feature lighting
- Heated towel rails
- Frameless, glass shower screens
- Floor-level ‘wet room’ showers in master en-suites

- Wall-mounted toilet roll holder and robe hooks in chrome
- Wall-mounted dual flush WCs with soft-close seat cover and concealed cistern (‘Geberit Aquaclean’ WCs to master en-suites)
- Ceiling-mounted ‘rain head’ showers and separate hand showers in shower areas
- Sanitaryware by Dornbracht

## INTERIOR FINISHES (optional)

### Apartments

- Walls and ceilings to be finished in white matt paint (where other finishes are not applied)
- Bespoke gutted full-height wardrobes for all bedrooms (from Polyform), in a dark timber veneer finish (gutted internally with rails, shelves and drawers)
- Multi-point locking timber veneered full-height front door with spyhole
- Stainless steel and leather door lever furniture
- Lacquered oak-engineered timber flooring to hall, living room, kitchen and bedrooms

### Common Areas (Entrance Lobby)

- Feature entrance lobby with bespoke concierge desk
- Polished stone tiling to floor with feature stone border
- Textured wallpaper with timber trim and leather feature panels
- Bronze and mirror panels on the walls

### Common Areas

- Carpeting to residential corridors and lift lobbies
- Timber architraves to doors

## OTHER FEATURES

### Apartments

- Full-height external bi-fold or casement doors to principal rooms (some apartments only)
- Openable windows
- Lightwell at basement level and external terrace to duplex
- Apartments G01, G02, G03 & G04
- Minimum ceiling height 2.5m principal rooms with feature coffered ceiling of over 2

### Common Parts

- Secure bicycle storage available for all apartments
- Lift access to all floors

### Electrical

- Video-audio door entry system
- Dimmable lighting in principal living areas
- Metal-faced, slim-line, switches and sockets
- Energy efficient lighting
- Feature lighting in select locations

### Telecommunications

- Wiring for TV, Sky and data connection in living room and bedrooms
- Heating and cooling
- Thermostatically controlled comfort heating and cooling in all living rooms and bedrooms
- Underfloor heating in all principal rooms
- Electric underfloor heating in bathrooms

### Security and Peace of Mind

- Access to apartments via full-colour video door entry and electronic access to common areas
- Key fob security entry into the building
- CCTV in ground floor entrances and common areas
- Mains supply heat/smoke detectors in all apartments
- Smoke detectors in common areas

G E T I N T O U C H

THE CONCEPT BOOK  
4 BHK LUXURIOUS  
RESIDENCES



WWW.WONDRELA.COM

\*All pictures, information, text, details, plans etc. are to showcase creative and design capabilities. Brochure is not representation of any actual project or company