

Premium
CRAFTSMANSHIP
D E F I N E D



“Bharat ka apna hardware”



PRODUCT CATALOG



Premium Telescopic Channel

- ⦿ Size : 6" To 36" Inch
- ⦿ Packing : 15 set/box
- ⦿ Finish : Black / Zinc
- ⦿ Load Capacity : 50 KG
- ⦿ Ball : 2 Ball Bearings
- ⦿ Made From Tata Sheet
- ⦿ Lifetime Warranty
- ⦿ MRP : 27/Inch



Standard Telescopic Channel

- ⦿ Size : 10" To 24" Inch
- ⦿ Finish : Black / Zinc
- ⦿ Load Capacity : 35 KG
- ⦿ Ball : 2 Ball Bearings
- ⦿ Made From Tata Sheet
- ⦿ 5 Years Warranty
- ⦿ MRP : 24/Inch



Stainless Steel Telescopic Channel

- ⦿ Size : 10" To 24" Inch
- ⦿ Ball : 4 Ball Bearing
- ⦿ Made From Jindal Steel
- ⦿ Load Capacity 40 Kg
- ⦿ 100000 Cycle Tested
- ⦿ Made In India
- ⦿ MRP : 40/Inch



Soft Close Telescopic Channel

- ⦿ Finish : Black / Zinc
- ⦿ Size : 10" To 24" Inch
- ⦿ Load Capacity : 50 Kg.
- ⦿ Ball : 2 Ball Bearing
- ⦿ Packing : 10 Sets / Box
- ⦿ Made From Tata Sheet
- ⦿ MRP : Page No. 8



SS Soft Close Channel

- ⦿ Finish : Stainless Steel
- ⦿ Size: 12" To 24" Inch
- ⦿ Load Capacity: 40 Kg
- ⦿ Ball: 2 Ball Bearing
- ⦿ Double Spring Soft Close
- ⦿ MRP : Page No. 8



Slim Tandem Box

- ⦿ Height- 4", 6" & 8"
- ⦿ Length - 350 mm To 550 mm
- ⦿ Weight Capacity - 45 Kg
- ⦿ Colour - Grey
- ⦿ Closing Type - Soft Closing
- ⦿ 5 Years Warranty
- ⦿ MRP : Page No. 8



Aluminium Profile

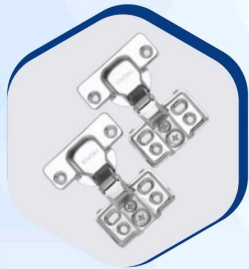
- ⦿ High Grade Aluminium
- ⦿ Size: 3 Mtr/PC
- ⦿ Finish: CP, Rose Gold, SS Brush, Iron Grey, Matte Black, Golden
- ⦿ Type: G profile, Glass/Shutter Profile, Handle Profile, Bindi Handle, J Gola, C Gola, TOP Gola, J Profile



Curtain Pipe

- ⦿ Stainless steel (Jindal 202)
- ⦿ Size: 3/4 inch and 1 inch
- ⦿ Finish:- Mirror Finish
- ⦿ Made In India
- ⦿ Rust Free





Short Arm Hinge

- Crank Size- 8°
- Finished Type - SS
- Material - Stainless Steel
- Rust Free
- MRP : 199/Pair



Normal Auto Hinge

- Crank size - 0°, 8°, 15°
- Color - Nickel Finish
- Cycle Tested : 100000
- Material - Mild Steel
- MRP : 85/Pair



MS 2D Auto Hinge

- Crank Size : 0°, 8°, 15°
- Colour : Nickel Finish
- Cycle Tested : 100000
- Clip On Hinge
- High Strength Hydraulic Pump
- MRP : 225/Pair



SS 2D Auto Hinge

- Crank Size : 0°, 8°, 15°
- Colour : SS Finished
- Cycle Tested : 100000
- Material - Stainless Steel
- High Strength Hydraulic Pump
- MRP : 340/Pair



MS 3D Auto Hinge

- Crank Size : 0°, 8°, 15°
- Colour : Nickel Finish
- Cycle Tested : 100000
- High Strength Hydraulic Pump
- Easy Adjustment of Height & Side
- MRP : 375/Pair



SS 3D Auto Hinge

- Crank Size : 0°, 8°, 15°
- Colour : SS Finish
- Cycle Tested : 100000
- High Strength Hydraulic Pump
- Raw Material: Stainless steel
- Easy Adjustment of Height & Side
- MRP : 475/Pair



MS Auto Hinge 165° (Soft Close)

- Crank Size: 165°
- Colour : Nickel Finish
- High Strength Hydraulic Pump
- MRP : 550/Pair



MS HINGE 135°

- Crank Size : 135°
- Colour : Nickle Finish
- Material - Mild Steel
- MRP : 350/Pair





MS Hinge 90° (Soft Close)

- ◉ Crank Size: 90°
- ◉ Colour: Nickle Finish
- ◉ Material: Mild Steel
- ◉ MRP : 399/Set



SS 304 Hinge

- ◉ Crank Size: 0°, 8°, 15°
- ◉ Raw Material: 304 Stainless Steel
- ◉ Colour : SS Finish
- ◉ Cycle Tested : 100000
- ◉ High Strength Hydraulic Pump
- ◉ MRP : 549/Set



3D Slim Hinge (Soft Close)

- ◉ Finish: Titanium Black
- ◉ 3D Adjustment
- ◉ Sleek Design
- ◉ Crank Size: 0°, 8°
- ◉ MRP: 599/Set



Titanium 3D Hinge

- ◉ Crank Size: 0°, 8°, 15°
- ◉ Colour : Titanium Finish
- ◉ Cycle Tested: 1000000
- ◉ High Strength Hydraulic Pump
- ◉ MRP: 475/Set



Cabinet Buffer (Push To Open)

- ◉ Material: High Strength POM
- ◉ Colour: Light Grey
- ◉ Operation: Push To Open
- ◉ MRP: 119/PC



Butt Hinge

- ◉ Raw Material: Stainless Steel Jindal 202
- ◉ Welded Hinge
- ◉ Finish: SS Matte
- ◉ MRP : Page No.8



Ball Bearing Butt Hinge

- ◉ Finish: SS And Antique
- ◉ 4 Ball Bearing
- ◉ Size: 5*3*2.6mm
- ◉ Raw Material: Stainless Steel 304
- ◉ Smooth Movement of Doors
- ◉ MRP : **SS** 1030/Set
Antique 1365/Set



Door Stoper (Magnetic)

- ◉ Finish: SS & Antique
- ◉ Raw Material- Stainless Steel
- ◉ High Strength Magnetic Stoper
- ◉ Soft Close Mechanism
- ◉ MRP : **SS** 340/PC
Antique 440/PC





Digital Drawer Lock

- ⦿ USB Emergency Unlock
- ⦿ Low Battery Alarm
- ⦿ Bright Light
- ⦿ E-key option
- ⦿ Fingerprint ID Upto 20 Unique Users
- ⦿ MRP : 4999/PC



Knob Lock

- ⦿ Finish: SS And Antique
- ⦿ No. of keys -3
- ⦿ Anti theft engineering technology
- ⦿ Made of Stainless Steel
- ⦿ Brass Cylinder with Brass computer keys
- ⦿ Locking - Lock/ Unlock Both Side, Outside Key & Inside Thumb Turn
- ⦿ MRP: Page No.8



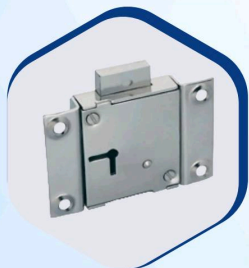
Multipurpose lock (Aluminum)

- ⦿ Made of Aluminium Metal
- ⦿ Key: High Precision Key
- ⦿ Color: Brown
- ⦿ Rust Resistant Components
- ⦿ No. of Keys - 2
- ⦿ MRP : 139/SET



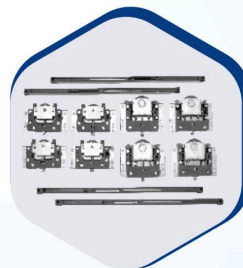
Multipurpose lock (Iron)

- ⦿ Material: Iron
- ⦿ Finish: SS Finish
- ⦿ No. of Keys - 2
- ⦿ MRP : 85/SET



Cupboard lock

- ⦿ Single sliding bolt with 3 stroke
- ⦿ No. of keys - 2
- ⦿ Finish - SS
- ⦿ Double locking system
- ⦿ Single Side Opening
- ⦿ MRP : 299/SET



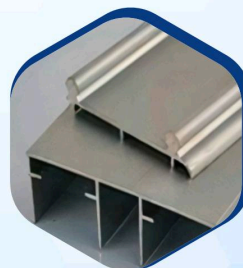
Top Screw Sliding Door Roller

- ⦿ High Pressure Roller
- ⦿ Smooth, Stable & Silent Sliding
- ⦿ 50000 Cycle Tested
- ⦿ Soft Close & Soft Opening Mechanism
- ⦿ MRP : 2799/SET



Universal Sliding Door Roller

- ⦿ Variant- Universal
- ⦿ 50,000 Cycle Tested
- ⦿ High Pressure Roller
- ⦿ Smooth, Stable & Silent Sliding
- ⦿ Soft Close & Soft Opening Mechanism
- ⦿ MRP : 3099/pc



Slim Double Track

- ⦿ Raw Material: Aluminium
- ⦿ Finish: Anodised
- ⦿ Color: Grey
- ⦿ Use: Top, Middle, Universal Door Roller





Door Closer

- Upto 120 Degrees Opening Doors
- Door/frame Mounting
- 2,00,000 Cycle Tested
- Right Hand And Left Hand Opening Doors
- Door Weight Capacity 60kg & 80 Kg
- MRP : 1200/PC



Pelmet Door Closer

- Right Hand and Left hand Opening doors
- Door Frame Mounting
- Upto 180° Opening doors
- Door Weight Capacity 120 KG
- 3,00,000 Cycle Tested
- MRP : 3850/PC



Premium Door Closer

- 2,00,000 Cycle Tested
- Upto 120° Opening Doors
- Door/Frame Mounting
- Door Weight Capacity 80 KG To 100 KG
- Right Hand And Left Hand Opening Doors
- MRP : 2000/PC



Gas Spring 9 Inch

- Silent Closing System
- Easy To Fit
- Weight Capacity: 5,10, 15, 20, 25 Kg
- Easy To Fit
- Colour - Silver Finish
- MRP : 260/SET



Gas Spring 12 Inch

- High Durability
- Colour: Black Finish
- Pump Loading Capacity: 10, 15, 20, 25,30, 35KG
- Smooth Shutter Opening and Closing
- MRP: 516/SET



Gas Spring 17 Inch

- Smooth Shutter Opening and Closing
- High Durability With Heavy Duty
- Colour: Black Finish
- Pump Loading Capacity: 75kg,100kg,125kg, 150kg, 175kg, 200kg, 225kg, 250kg
- MRP: 1039/SET



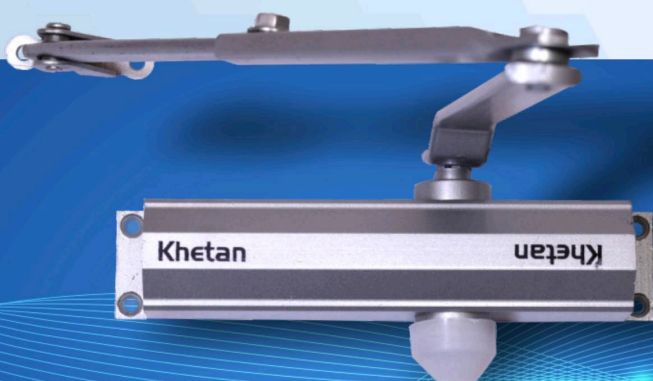
Bed Fitting

- Frame Size- 900, 1200, 1500mm
- Finish: Black
- Improved Design For High Strength
- Easy Access With Wide Opening of 33 Degrees
- MRP : Page No.8



Dry Wall Screw

- Fine thread & Self Tapping
- Quick Penetration Into Light Gauge Metal
- Thickness : 3.5mm & 4.2mm
- Finish : Black & Nickle
- Size : 13mm, 16 Mm, 19mm, 25mm, 32mm, 38mm, 50mm, 60mm, 75mm, 100mm



PRICE LIST

Premium Telescopic Channel (50 Kg Load Capacity)

Size	6"	8"	10"	12"	14"	16"	18"	20"	22"	24"	26"	30"	36"
MRP/Pair	216	270	270	324	378	432	486	540	594	648	702	810	972

Standard Telescopic Channel (35 Kg Load Capacity)

Size	10"	12"	14"	16"	18"	20"	22"	24"
MRP/Pair	240	288	336	384	432	480	528	576

Stainless Steel Telescopic Channel (40 Kg Load Capacity)

Size	10"	12"	14"	16"	18"	20"	22"	24"
MRP/Pair	400	480	560	640	720	800	880	960

Soft Close Channel (50 Kg Load Capacity)

Size	10"	12"	14"	16"	18"	20"	22"	24"
MRP/Pair	690	760	830	900	970	1050	1130	1205

SS Soft Close channel (40 Kg Load Capacity)

Size	12"	14"	16"	18"	20"	22"	24"
MRP/Pair	1020	1190	1360	1530	1700	1870	2040

SS Butt Hinge

Size	3*14	4*12	5*14	5*12	4*14	3*12	3*16
MRP/PC	69	129	129	159	99	89	59

Slim Tandem Box

Size	Height↓ / length →	14"	16"	18"	20"	22"
MRP/PC	4"	2099	2399	2699	2999	3299
	6"	2449	2799	3149	3499	3849
	8"	2799	3199	3599	3999	4399

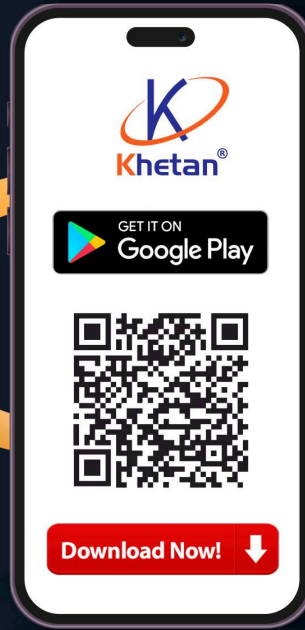
Bed Fitting

Size	900 MM	1200 MM	1500 MM
MRP	2000	2500	2900

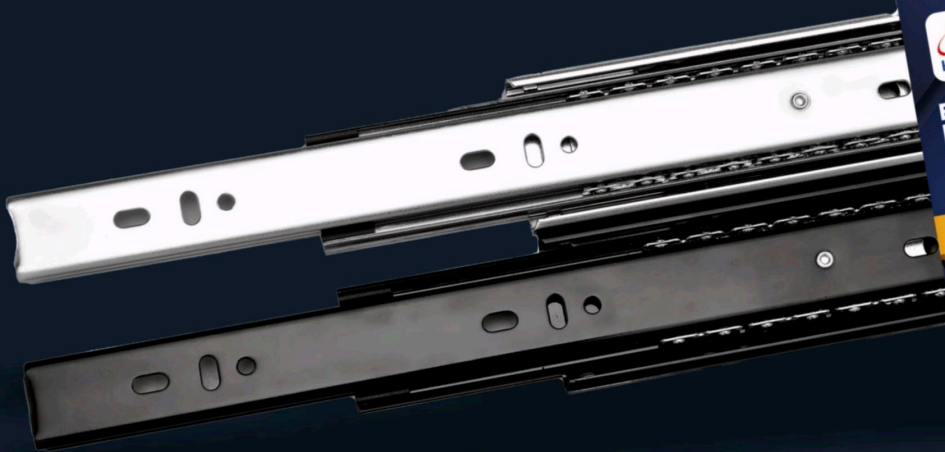
Knob Lock

Finish	SS (Without Keys)	SS (With Keys)	Antique (Without Keys)	Antique (With Keys)
MRP/PC	949	1049	1199	1299





**KHETAN
SAATHI
APP**



MFG BY

KHETAN UDYOG

B-40, 2nd Phase, Industrial Area, Adityapur,
Jamshedpur, Jharkhand (India) - 832109



+91 9155448611 | +91 7004682315



slides@khetangroup.net

www.khetangroup.net