



# PROZOR TECH PRIVATE LIMITED

Your complete fenestration solution

**uPVC & ALUMINIUM WINDOWS AND DOORS**







## ABOUT US:

*One-stop solution for all your window & door requirements. Backed with the facility of fully automated machines from Europe, operated by a highly skilled workforce and a professional installation team. Prozor Tech offers a wide variety of designs along with 100% customization.*

Unmatched  
FEATURES

Unbeatable  
ADVANTAGES



### Casement Windows

*The classic design in fenestration are the casement windows. They offer better sound insulation than all.*

*(Available in uPVC & Alumium)*



### Sliding Windows

*These windows are perfect for places with limited space. They are smooth to roll & easy to mantain.*

*(Available in uPVC & Alumium)*



### Parallel Windows

*They are designed for maximum ventilation & ideal for staircase, landings & offices.*

*(Available in uPVC)*



### Twin Sash Windows

*This is a combination of inward & outward opening window with a provision of security grill in between.*

*(Available in uPVC)*



### Tilt & Turn Windows

*They provide a tilt option for secure ventilation & accepts a full range of European standard hardware.*

*(Available in uPVC)*



### Vertical Sliding Windows

*These windows help in areas where the openings are not possible, thus allowing ventilation.*

*(Available in uPVC)*

WALNUT

MAHOAGANY

RUSTIC  
OAK

GOLDEN  
OAK

DARK OAK

ANTHRACITE  
GREY

FLEMISH  
GOLD

SMOOTH  
GREY

BLACK  
SMOOTH

## UPVC COLOUR OPTIONS AVAILABLE



### Casement Doors

*They are suitable for opening in & opening out mode. Can be used as main entrance doors, patios or balconies.*

*(Available in uPVC & Alumium)*



### Sliding Doors

*They provide flexibility from single sliding to multiple sliding openers & a range of section sizes for all openings.*

*(Available in uPVC & Alumium)*



### Fold N Slide Doors

*The door system is engineered using high quality hardware & locking sytems that are reliable & secure.*

*(Available in uPVC)*



### Twinsash Doors

*Comprises of 2 independently operated door sashes - for mosquito screen & glazing.*

*(Available in uPVC)*



### French Doors

*Also known as double door or double window, opening from the back of a house into its garden/balcony.*

*(Available in uPVC & Alumium)*



### Invisi Fold Doors

*They are designed to convert standard welded windows & doors into sliding/ folding/swing systems.*

*(Available in uPVC)*



RAL 9003	RAL 9016	METALLIC	RAL 7003	RAL 7022	RAL 7032	RAL 7035
RAL 7043	RAL 7045	GREY	RAL 9005	RAL 9006	RAL 9007	STEEL BRONZE 1
GREY	BRONZE III	GREY	GREY	GREY	RAL 9007	SPLENDOR

## ALUMINIUM COLOUR OPTIONS AVAILABLE



We provide complete window & door solutions, from initial design to production and final installation of window systems for both home and commercial use, Prozor Tech systems are number one in styling and a benchmark for engineering precision. Our systems come in a range of shapes and sizes, are custom designed to suit the local requirements, fabricated to exact dimensions and fitted-to-suit the particular requirement options.

Be it any design or specification, Prozor Tech has a solution - of style and elegance to meet all expectations.





**ENKU 70 SLIDE TT – 2 & 3 TRACK SLIDING DOORS & WINDOWS**

The **ENKU 70 Slide TT** system sliding doors and windows solve the demand for a balanced combination of performance, design and functionality. Its "slim" form lets in the daylight so that your rooms, terraces, gardens, and pools remain bright and welcoming. The movement of the sliding element is always easy and light, even when panels are very heavy.

The **ENCRAFT EKU Pe 70 Slide TT series** can make medium-sized sliding doors and windows with two, three, or four panels. Some of the advantages are that it provides good thermal insulation, reduces noise upto 39 dB.

**ENKU 53 series** system window systems are ideal for windows and French windows with or without roller shutters, external doors, fixed glazing and glazing for industrial and manufacturing use or for public and private constructions, in climate zones where conditions are harsh. They are energy-efficient and a great energy saver. They are robust, durable, and weather-resistant.

They come with excellent air and water tightness. They provide a good level of noise reduction (Upto 39 dB).



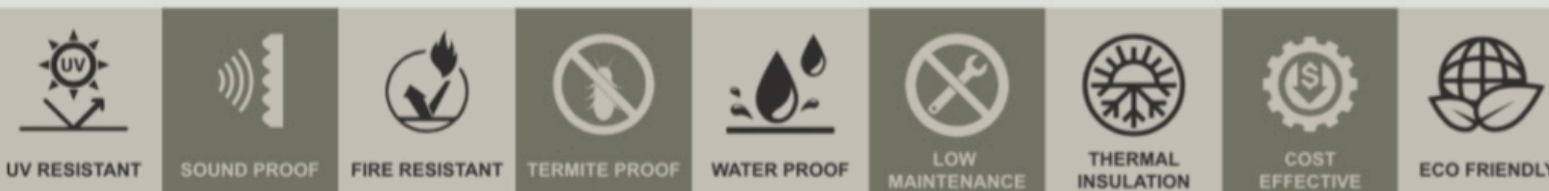
**ENKU 53 SERIES – FRENCH CASEMENT WINDOWS**



**ENKU PERFECTION SLIDE**

**ENKU PERFECTION SLIDE** is the new sliding system with a slender design that compliments the Aluminium range. The minimal aesthetics (central node of only 20 mm) are accompanied by innovative technical solutions. The system comes with a thermal break and non-thermal break; the glazing has seals and partial structural seals and the angles are aligned at 45 degrees.

The reduced area of the profiles, the greater glazed surface, the possibility of installing double-glazing, and the development of higher quality insulating materials have enabled the **ENCRAFT EKU Aluminium SLIDE** windows to perform best in terms of thermal transmittance (UW) & light transmission. These sliding doors can reduce sound upto 47 dB.



**UV RESISTANT    SOUND PROOF    FIRE RESISTANT    TERMITE PROOF    WATER PROOF    LOW MAINTENANCE    THERMAL INSULATION    COST EFFECTIVE    ECO FRIENDLY**



	uPVC	Aluminium
PROFILE TO GLASS RATIO	Thicker Profile	Slimmer Profile
COLOUR OPTIONS	White, Black, Grey, Gold & different shades of Wood	Different RAL shades that can be powder coated and anodized
WATER RESISTANT	Yes	Yes
THERMAL INSULATION	Yes	Yes
SOUND INSULATION	Yes	Yes
FIRE RESISTANT	Yes	Yes
TERMITE RESITANT	Yes	Yes
RECYCLABLE	Yes	Yes
ENVIRONMENT FRIENDLY	Yes	Yes

**ONE STOP SOLUTION**  
*for all your window & door requirements*

**CONTACT US:**

📍 68/5B, Ballygunge Place, 1st Floor, Kolkata 700019, India

☎ + 91 98307 90570; + 91 98834 46228

✉ info@prozortech.com; prozortech@gmail.com

🌐 www.prozortech.com





PROZOR TECH  
PRIVATE LIMITED

Your complete fenestration solution

## GLASS PARTITIONS







## ABOUT US:

A sleek looking profile with ease of installation and stylish look makes the Prozor Tech series a great style for space outlook. The sitting area looks clear and better which makes this a style icon. Smart in looks and installation, the slender design will make your space look more elegant. The sturdy finish gives a look which makes the space look better.

Slender  
DESIGN

Unbeatable  
ADVANTAGES

### MERCURY



- The minimal Divider System with 25mm x 25mm section.
- Prozor Tech **Mercury 25 series** provides minimal visibility partition, resulting in full utilization of daylight due to its sectional design.
- 10mm & 12mm Clear toughened or 10.76, & 11.52 Clear laminated glass.
- Single Glazed Partition (Block Design Compatible in Divider system or Stick-On system).
- Partition height can be considered upto 3000 mm.
- All exposed aluminum sections are Anodized and come in 6063 with T5 Grade.
- **Shades available:** Silver Anodized / Mid Night Black / (Mill finish also available, Anodizing shades or powder-coating subject to test on Prozor Tech profiles min qty 500 sq ft).
- **Door frames:** Doors can be mounted either on Hinges, patch systems, or Pivot doors for frameless glass doors, Stile doors also can be incorporated.
- **Sound insulation capacity:** 28 dB to 32 dB

- Prozor Tech **Venus 45 series** provides Slim line design system providing full height partition as well as block design adaptability.
- 10mm & 12mm clear toughened or 10.76, 11.10 & 11.52 Clear laminated glass.
- Single Glazed Partition (Block Design Compatible in Divider system or Stick-On system).
- Partition height can be considered up to 3000 mm.
- All exposed aluminum sections are Anodized and come in 6063 with T5 Grade.
- **Shades available:** Silver Anodized / Mid Night Black / (Mill finish also available, Anodizing shades or powder-coating subject to test on Prozor Tech profiles min qty 500 sq ft)
- **Door frames:** Doors can be mounted either on Hinges, patch systems or Pivot doors for frameless glass doors, Stile doors also can be incorporated.
- **Sound insulation capacity:** 32 dB to 34 dB.

### VENUS

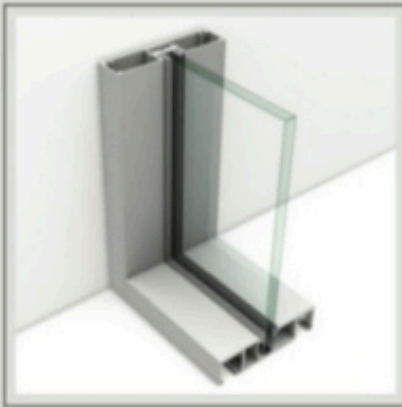




RAL 9003	RAL 9016	METALLIC	RAL 7003	RAL 7022	RAL 7032	RAL 7035
RAL 7043	RAL 7045	GREY	RAL 9005	RAL 9006	RAL 9007	STEEL BRONZE 1
GREY	BRONZE III	GREY	GREY	GREY	RAL 9007	SPLENDOR

## GLASS PARTITION COLOUR OPTIONS AVAILABLE

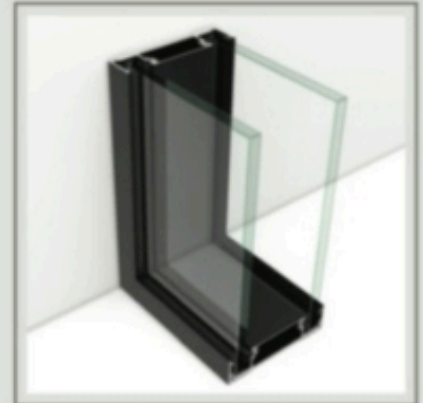
### JUPITER



- Classy Wideline System with 105mm x 25 mm section.
- Prozor Tech **Jupiter 105 series** provides a Wide line design system providing full height partition as well as block design adaptability giving a moderate acoustic performance.
- 10mm & 12mm Clear toughened or 10.76, & 11.52 Clear laminated glass.
- Single Glazed Partition.
- Partition height can be considered upto 3000 mm.
- All exposed aluminum sections are Anodized and come in 6063 with T5 Grade.
- **Shades available:** Silver Anodized / Mid Night Black /(Mill finish also available, Anodizing shades or powder coating subject to test on Prozor Tech profiles min qty 500 sq ft).
- **Door frames:** Doors can be mounted either on Hinges, patch systems or Pivot doors for frameless glass doors, Stile doors also can be incorporated in 65 series and 75 series both.
- **Sound insulation capacity:** 28 dB to 32 dB

- Prozor Tech **Saturn 105 series**, Wide line design system providing full height partition in Double glaze system giving high acoustic performance.
- 10mm & 12mm Clear toughened or 10.76, 11.10 & 11.52 Clear laminated glass
- Double Glazed Wideline System with 105mm x 25mm section.
- Double Glazed Partition.
- Partition height can be considered upto 3000 mm.
- All exposed aluminum sections are Anodized and come in 6063 with T5 Grade.
- **Shades available:** Silver Anodized / Mid Night Black /(Mill finish also available, Anodizing shades or powder coating subject to test on Prozor Tech profiles min qty 500 sq ft).
- **Door frames:** Doors can be mounted either on Hinges, patch systems or Pivot doors for frameless glass doors, Stile doors also can be incorporated in 65 series and 75 series both.
- **Sound insulation capacity:** 44 dB to 48 dB.

### SATURN



## BENEFITS OF GLASS PARTITIONS

- ✓ Improved acoustics.
- ✓ Aesthetically pleasing workspace.
- ✓ More natural light.
- ✓ Durability and complete safety.
- ✓ Unsurpassed visual appearance.
- ✓ Allow natural light to enter your rooms easily.
- ✓ The commercial systems are scalable and can be modified when required.
- ✓ They can be moved around your office easily letting you adapt the design to suit your changing needs.
- ✓ They are more affordable than traditional drywall installations and other building materials.
- ✓ Frameless glass walls reduces additional electricity requirement, helping you cut down on electricity bills and become more eco-friendly.
- ✓ Amplitude. It gives a greater sense of space and makes each room seems bigger than it actual size.





FRAMED CASEMENT DOORS



STILE DOORS



SHOWER CUBICLES



SLIDING PARTITION



FIXED INTERNAL PARTITIONS WITH GEORGIAN BARS



FIXED + FLOOR SPRING DOOR

*Types of Glass Partitions*

**ONE STOP SOLUTION**  
*for all your glass partition requirements*

**CONTACT US**

📍 68/5B, Ballygunge Place, 1st Floor, Kolkata 700019, India  
☎ + 91 98307 90570; + 91 98834 46228; +91 85838 67346  
✉ info@prozortech.com; prozortech@gmail.com  
🌐 www.prozortech.com





## INTERNAL SLIDING PARTITION

PROZORTECH *Slim Glaze modular aluminium profile* is used as partition system. Telescopic, synchronised and fixed + sliding system divide space according to the requirement. In telescopic options available are 1+2,1+3,1+4(fixed + sliding). In synchronised sliding two parts are movable depending on the space.

PROFILE : 16mm x 45mm | GLASS THICKNESS : 5mm,8mm or 10mm | MAX DOOR WEIGHT : 60Kg - 75Kg | MAX HEIGHT AND WIDTH : 600mm - 790mm | COLOURS : Matt black



## RAILINGS

PROZORTECH *Glass Railings* are easy to install, easy to clean, maintenance free and weather proof. It is an ideal stairs and balconies.

GRADE - Stainless Steel 304 | HEIGHT - 450mm(recommended) | GLASS THICKNESS - 12mm-15mm(depending on the profile) | COLOURS - Black, Grey, Silver, Walnut Brown, Wooden Laminate Brown



PROZOR TECH  
PRIVATE LIMITED

Your complete fenestration solution





## CASEMENT WARDROBE PARTITION

PROZORTECH *Air hinges wardrobe* is a masterpiece of compactness in design. A well developed wardrobe with slim-line look gives a perfect look to the wardrobe. Air hinges are installed at the top and bottom panel of the cabinet. It can be used on 25mm wooden door or aluminium framed door. Air hinges is the new fusion of technology and aesthetics that makes a new era in the development of shutter opening system.

PROFILE : 25mm x 26mm | GLASS THICKNESS : 4mm - 5mm | MAX DOOR WEIGHT : 20kgs | MAX HEIGHT AND WIDTH : 2100mm x 600mm  
 OPENING ANGLE : 105 degree | COLOURS : Matt Black, Super Rose Gold, Gold Brush, Matt Grey



## SLIDING WARDROBE PARTITION

PROZORTECH *sliding wardrobe* partition with 2 doors or 3 doors, looks elegant and easy to use. It can be installed with wood, marble, tile etc upto 10mm and max weight capacity.

PROFILE : 25mm x 26mm | GLASS THICKNESS : 4mm - 5mm | MAX DOOR WEIGHT : 50kgs | MAX HEIGHT AND WIDTH : 2700mm x 900mm  
 OPENING ANGLE : 105 degree | COLOURS : Champagne, Glossy, Rose Gold, Midnight Black, Super Champagne



PROZOR TECH  
 PRIVATE LIMITED

Your complete fenestration solution