



## THE ENERGY BOOSTER OF WATER

- Sale & Services Of All Type Of Pumps & Pumping Systems Including Spares.
- Manufacturing, Sale, Services & Modifications Of All Type Pumping System Control Panel.
- Sale, Service & Rewinding Of All Type DC, AC, LT & HT Motors.
- Sale & Services Of Hydropneumatics Air Vessel, Air Separators, Suction & Discharge Diffuser , Triple Duty Valves.
- On Door Services - Annual Service & Spare Rate Contract, Annual Maintenance Contract, On Visit Basis Services, Third Party Audit, Energy Audit, Pump & System Consultancy, Repair & Maintenance On Call Basis.

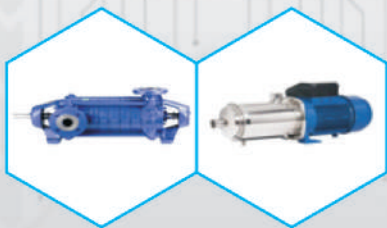
## PUMPS AND PUMPING SYSTEM



**VERTICAL MULTI STAGE INLINE PUMPS:-** For Industrial and Domestic Pressure Boosting, Boiler Feed, Reverse Osmosis (RO), DM Plant, Hot and Cold water and Coolant circulation, Industrial Washing, Firefighting Systems, water supply in Buildings and Irrigations. Range - Up to 90 m<sup>3</sup>/hr, and Head up to 300 meters.



**WASTE WATER PUMPS:-** Submersible and Self priming Surface waste water pumps are suitable for Pumping muddy water, storm water, and Sewage waters, in Hotels, Houses, Commercial Buildings, Complexes. Pumping Waste water in ETP, STP, mines, tunnels, municipal man holes, septic tanks etc



**HORIZONTAL MULTISTAGE PUMPS:-** For Pressure Booster systems, R.O., D.M. water, Air conditioning, chiller plants, etc. Flow- 12 m<sup>3</sup>/hr and Head up to 110 meters.



**CENTRIFUGAL END SUCTION PUMPS:-** End suction Pumps are suitable for HVAC, Fire Fighting, Cooling Tower, Pressure Boosting, Water Supply, all types of process industries for all types of chemicals and General Industrial applications. Flow up to 550 m<sup>3</sup>/hr, and Head up to 90 meters.



**CENTRIFUGAL MONOBLOCK PUMPS:-** Standard CI construction Powered by TEFC motor. Can be used in Industries, high rise Buildings, Hotels, Cooling Tower, drip and sprinklers. Flow -120 m<sup>3</sup>/hr, and Head 75 meters.



**BOOSTER SYSTEMS:-** MH Booster systems maintains the even water pressure in all outlets. When the pressure drops to the pre-set level, the pump will start and meet the demand. When the pressure attains its maximum pre-set pressure, the pump will be switched off. The pumps mainly used in residential building, industries, hostel, hospital, schools, apartments and Bungalows. The flow up to 12m<sup>3</sup>/hr and head up to 5 bars.



**HYDRO PNEUMATIC SYSTEMS:-** Vertical multi-stage pump maximizes performance, demonstrates high degree of consistency and is economical. The VFD (Variable Frequency Drive) automatically adjusts the speed with variable flow rates to uniformly maintain the desired water pressure Pumps with VFD lasts longer as they can adjust the workload to meet the system requirement extremely quiet and low vibration when in operation. The smooth, automated start and stop, reduces water hammer It solves the problem of low hydraulic pressure The system keeps the water pressure stable throughout the entire building It avoids water pollution caused by roof tanks It also serves as the best Replacement for the traditional roof tank water supply way, which is a source of water pollution. These systems mainly residential building, industries, hostel, hospital, schools, apartments.



**HORIZONTAL SPLIT CASING PUMP:-** horizontal signal stage, double suction. Double volute axially split casing centrifugal pump. Dynamically balanced double suction impeller for vibration free operation. These pumps mainly used in HVAC, Irrigation, fire protection, steel and cement industry, paper mill, oil and petrochemical industry, Treatment plant, etc.



**CHEMICAL PROCESS & GENERAL REFINERY SERVICE PUMP:-** Newly introduce pump for chemical process and General Refinery pump with customized design available in horizontal and vertical configuration. These pumps are suitable for Paper pulp & process, steel plant mining, chemical & Process Transfer. & other industrial application.

## CONTROL PANELS



### DEWATERING PUMPING SYSTEM CONTROL, PANELS

- CUSTOM AND STANDARD PANELS DESIGN.
- RANGE - 05 HP - 100 HP
- 1 WORKING, 1 WORKING 1 STANDBY, DUTY ASIST,
- MANY PUMPS AS PER DEMAND OF WORKING AND STANDBY,
- TYPE TWO CO-ORDINATION
- ANALOG & DIGITAL WITH & WITHOUT CONTACTOR RANGE.
- INDOOR & OUTDOOR APPLICATIONS



### OVER HEAD TRANSFER PUMPING SYSTEM CONTROL PANEL

- CUSTOM AND STANDARD PANELS DESIGN.
- RANGE - 05 HP - 100 HP
- 1 WORKING, 1 WORKING 1 STANDBY, DUTY ASIST,
- MANY PUMPS AS PER DEMAND OF WORKING AND STANDBY,
- TYPE TWO CO-ORDINATION
- ANALOG & DIGITAL WITH & WITHOUT CONTACTOR RANGE
- INDOOR & OUTDOOR APPLICATIONS



### HYDROPNEUMATIC PUMPING SYSTEM CONTROL PANEL

- CUSTOM AND STANDARD PANELS DESIGN.
- RANGE - 05 HP - 100 HP
- 1 WORKING, 1 WORKING 1 STANDBY, DUTY ASIST,
- MANY PUMPS AS PER DEMAND OF WORKING AND STANDBY,
- TYPE TWO CO-ORDINATION
- DOL, STARDELTA, SOFTSTARTER, VARIABLE SPEED OPERATIONS.
- PLC LOGIC,
- ANALOG & DIGITAL INPUTS
- SINGLE & MULTI VFD.
- INDOOR & OUTDOOR APPLICATIONS
- ANALOG & DIGITAL WITH & WITHOUT CONTACTOR RANGE



### HVAC PUMPING SYSTEM CONTROL PANEL

- CUSTOM AND STANDARD PANELS DESIGN.
- RANGE - 05 HP - 200 HP
- 1 WORKING, 1 WORKING 1 STANDBY, DUTY ASIST,
- MANY PUMPS AS PER DEMAND OF WORKING AND STANDBY,
- TYPE TWO CO-ORDINATION
- DOL, STARDELTA, SOFTSTARTER, VERIABLE SPEED OPEARATIONS.
- PLC LOGIC,
- ANALOG & DIGITAL INPUTS
- SINGLE & MULTI VFD.
- INDOOR & OUTDOOR APPLICATIONS
- VERIABLE PRIMARY, SECONDARY & CONDENSOR APPLICATION



### FIRE FIGHTING PUMPING SYSTEM CONTROL PANEL

- CUSTOM AND STANDARD PANELS DESIGN.
- RANGE - 05 HP - 400 HP
- MANY PUMPS AS PER DEMAND OF WORKING AND STANDBY,
- TYPE TWO CO-ORDINATION
- DOL, STARDELTA, SOFTSTARTER, VERIABLE SPEED OPEARATIONS.
- PLC LOGIC, PRESSURE LOGSHEET DATABASE.
- ANALOG & DIGITAL INPUTS
- INDOOR & OUTDOOR APPLICATIONS



### BUILDING VENTILLATION SYSTEM CONTROL PANEL.

- FIRE AND SAFETY STANDARD
- FIRE & SMOKE INTEGRATION
- HIGH AND LOW SPEEDS
- CO2 CONTROLS
- CIRCULATION OF OXYGEN
- FULLY AUTOMATIC

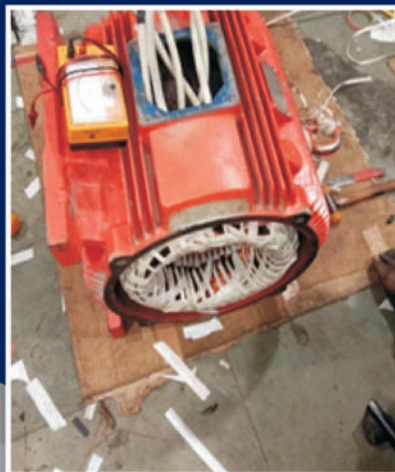
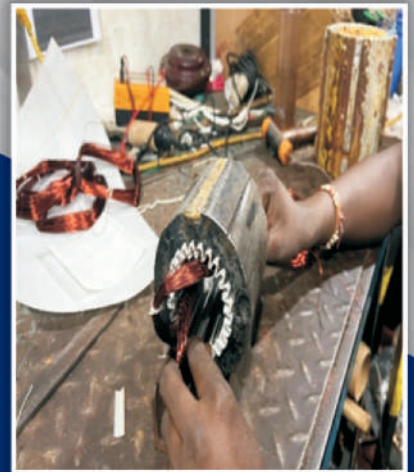


### OLD CONTROL PANEL LOGIC MODIFICATION

- COST SAVING FACTOR
- CUSTOM AND STANDARD PANELS DESIGN.
- RANGE - 05 HP - 100 HP
- 1 WORKING, 1 WORKING 1 STANDBY, DUTY ASIST,
- MANY PUMPS AS PER DEMAND OF WORKING AND STANDBY,
- TYPE TWO CORDINATION
- DOL, STARDELTA, SOFTSTARTER, VERIABLE SPEED OPEARATIONS.
- PLC LOGIC,
- ANALOG & DIGITAL INPUTS
- SINGLE & MULTI VFD.
- INDOOR & OUTDOOR APPLICATION

# WORKSHOP REPAIR FACILITY

- 1) MOTOR & PUMPS REPAIRING.
- 2) REWINDING.
- 3) PUMP AND MOTOR PERFORMANCE TESTING .



# HYDROPNEUMATICS AIR VESSEL

## HRM REPLACEABLE BLADDER TYPE



## BLADDER RANGE



## HFM FIX BLADDER TYPE



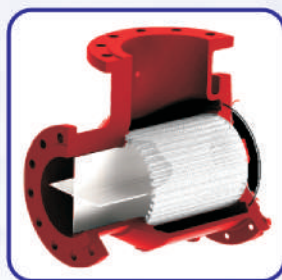
# AIR SEPARATORS

### TECHNICAL SPECIFICATIONS :

- Designed and Constructed as per ASME Code Section VIII, Div. 1
- Fabricated Carbon Steel Construction
- ASME Stamped & Certificates Available
- SS304 Removable Strainer on standard units, Ss316 optional
- Flanged Inlet and Outlet
- Standard Design Pressure 150PSI UPTO 8 inch & Larger are 125PSI
- 150,175,200,250, PSI and higher pressures available
- Maximum Design Temperature 375 Degrees.
- Provision for air vent at the top of unit
- Standard Enamel Exterior, Epoxy Coating optional
- Units are base mounted for floor installation

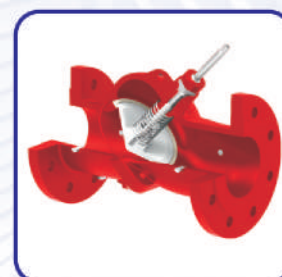


# SUCTION DIFFUSER



- Robust Cast Iron body for PN16/ANSI125 units and Ductile Iron body for PN25/ANSI250 Flanged units.
- Stainless steel AISI 304 guide vanes reduce flow turbulence and ensure uniform flow to the suction inlet of the pump.
- Metering Port allows monitoring of system conditions.
- Disposable start up mesh for cleaner and trouble-free system to protect pump mechanical sealing particular
- Permanent Stainless-steel strainer with 3mm perforation.
- EPDMO-Ring for easy access to maintenance of permanent strainer.
- Ductile Iron body cover on all units.
- Drain plug with built in magnet to trap small metallic particles.
- Available in PN16, PN25, ANSI Class 125 and 250 as per ASME B16.1.
- Grooved available optional on request.

# TRIPLE DUTY VALVES



- Hydro flex HTDV replace all the valves that are primarily required on discharge side of pump in a chilled water system.
- It's a Shut Off valve, non-Slam check valve, a balancing valve and throttling valve.
- Soft seated and accurately guided spring-loaded disc ensures leak free seal.
- The triple duty valves have been designed using CFD techniques to minimize head loss.
- Available in Straight pattern and Angular pattern to suit your discharge piping.
- Drain plug at inlet and outlet.
- Available in PN16, PN25, ANSI Class 125 & 250 as per ASME B16.1

## **ON DOOR SERVICES**

### **ANNUAL SERVICE & SPARE RATE CONTRACT**

We are offering one-time single contract for variable sites & projects for repair, maintenance & spares. Recent Running Contracts.

- 1) Macrotech Developers - (Lodha group) around all operational project
- 2) K Raheja - ( Matrix Services-) Around all operational project
- 3) Marathon Realty pvt ltd - Around all operational project
- 4) Taj Group
- 5) Hiranandani Group of Company
- 6) CCI Projects Group of Company
- 7) Godrej realty Group of Company
- 8) L & T REALTY Group of Company
- 9) Kalpataru Group of Company
- 10) Runwal Group of Company
- 11) Oberoi Group of Company
- 12) Peninsula Group of Company
- 13) IIT
- 14) Solitare Group

### **ANNUAL MAINTENANCE CONTRACT**

We are providing **comprehensive & non comprehensive** annual maintenance contract at near by 100 high rise residential and commercial projects for multiple brand pumping system. We are covering total pumping and ventilation systems in contract. We do not charge any labour charges in contact time. We are providing deep service of equipment's in scheduled visits & unlimited service support to client.

### **ON VISIT BASIS SERVICES**

We are offer services on chargeable visit basis for small site.

### **THIRD PARTY AUDIT**

We are offering Third party audit to client to inspect existing vendor or management operations & maintenance.

### **ENERGY AUDIT**

We are offering chargeable audits for cost saving of Capital, Operation and Maintenance.

### **PUMP & SYSTEM CONSULTANCY.**

We are providing design of pumping system as per requirement of client & NBC, fire authority standard.

### **REPAIR & MAINTENANCE ON CALL BASIS**

We offer maintenance on call to call basis.

## : Principle Authorizations :

### **KSB PUMPS -**

AUTHORISE SERVICE CENTER FOR INDUSTRIAL PUMPS

(AREA- MUMBAI, PUNE & KARAD)

AUTHORISE SERVICE CENTER FOR DOMESTIC & AGRICULTURE PUMP

(AREA- MUMBAI, PUNE & KARAD)

AUTHORISE DEALER FOR SPARE FOR INDUSTRIAL, DOMESTIC & AGRICULTURE PUMPS

(AREA- MUMBAI, KOKAN, GOA, PUNE & KARAD)

### **EBARA PUMPS -**

AUTHORISE SERVICE CENTER

(AREA- MUMBAI)

### **WILO PUMPS -**

AUTHORISE SERVICE PARTNER

(AREA- MUMBAI)

### **VARUNA PUMPS**

AUTHORISE SERVICE CENTER FOR DOMESTIC & AGRICULTURE PUMP

(AREA- MUMBAI, RAIGAD & KARAD)

### **KIRLOSKAR OIL ENGINE LTD (PUMP DIV)**

AUTHORISE SERVICE CENTER FOR DOMESTIC & AGRICULTURE PUMP

(AREA- MUMBAI, RAIGAD & KARAD)

### **CRI PUMPS**

AUTHORISE SERVICE CENTER FOR DOMESTIC & AGRICULTURE PUMP

(AREA- KARAD)

### **HYDROFLEX FLUID SOLUTION**

AUTHORISE DEALER

(FOR PRODUCT- AIR VESSELS, AIR SEPARATORS & SUCTION DIFFUSER & TRIPLE DUTY VALVE

(AREA- MUMBAI)

### **DANFOS**

OFFICIAL CHANNEL PARTNER FOR CONTROLLERS

### **KHYATEE ELECTRONICS PVT LTD**

OFFICIAL CHANNEL PARTNER FOR CONTROL PANELS & CONTROLS

## : OUR TEAM STRENGTH :

WE HAVE GOOD EXPERIENCED AND WELL EDUCATED TEAM WITH SEPARATE MULTIPLE DEPARTMENTS.

- FOR AMC - 30 PERSON WITH DIFFERENT 15 TEAMS.
- FOR PROJECTS - 20 PERSON WITH DIFFERENT 10 TEAMS.
- FOR MAINTENANCE - 20 PERSON INDIVIDUAL WORKING ON CALL BASIS.
- FOR WORKSHOP 10-15 PERSON INDIVIDUAL WORKING.
- FOR BACK OFFICE 10 PERSON INDIVIDUAL WORKING FOR CLIENT INTERFACE.
- SALES TEAM 5 PERSON.



## OUR NETWORK BRANCHES :

- REGISTER HEAD OFFICE -** 12/1, D.K. Chawl, Sai Nagar, Bhandup (E), Mumbai- 400042  
**CONTACT - Mr. Deepak Lokhande -** 09167211853, 09769226853  
**Email-** hydroteches@gmail.com, service@hydroteches.in, info@hydroteches.in.  
**Website-** www.hydroteches.in / www.hydroteches.co.in
- MUMBAI WORKSHOP -** Unit No C-4A, Agra Road Industrial Premises Co-Op. Society Limited, off. LBS Marg, Ghatkopar (West), Mumbai - 400 086.  
**CONTACT - Miss. Roshni Karanje -** 8104681208 / 022-46011853
- PUNE BRANCH OFFICE -** Flat No-9, Nath Krupa Apt, Near Narhe Corner, Dhayari Plata, Wadagaon Khurd, Pune 41.  
**CONTACT - Mr. Vinayak Pore Mobile-** 8976989943, 8378094486, 9167211853  
**Email-** hydrotechespune@gmail.com
- KARAD BRANCH OFFICE -** 330, Koyana Industrial Vasahat, Malakapur, Tal -Karad, Dist- Satara, Pin code 415110.  
**CONTACT - Mr. Pranit Thorawade-** Mob - 8976989956, 7066143245, 9167211853 Landline 0216-4241600.  
**Email-** hydrotecheskarad@gmail.com | **Website-** www.hydroteches.in / www.hydroteches.co.in
- PANVEL BRANCH OFFICE -** 121/6, 124/9, Siddhivinayak Eden, Palaspe, Raigad, Maharashtra 410206.  
**CONTACT - Mr. Prathamesh More -** Mob - 8976989973 / 9766172400  
**Email-** sale@hydroteches.in

---

## CONTACT US :-

- |                       |  |  |   |
|-----------------------|--|--|---|
| <b>FOR SALES -</b>    | <b>Pranita Sorate :</b> 8976989945<br><b>Email -</b> sorate.pranita@hydroteches.in | <b>Prathamesh More :</b> 8976989973<br><b>Email -</b> sale@hydroteches.in  | <b>Deepak Lokhande :</b> 9167211853<br><b>Email -</b> hydroteches@gmail.com |
| <b>FOR SERVICES -</b> | <b>Roshni Karanje :</b> 8104681208<br><b>Email -</b> service@hydroteches.in        | <b>Deepak Lokhande :</b> 9167211853<br><b>Email-</b> hydroteches@gmail.com |   |

