



SHIV SONS

PRODUCT CATALOGUE

**WATERPROOFING
CONSTRUCTION CHEMICALS**

BITUMINOUS PRODUCTS

INSULATION MATERIALS

**Shop No. 7, Shyam Vihar Market, Opp. LIC Building, Near Swiss Hotel,
G.T. Road Ghaziabad - 201 001(UP)**

W : www.shivsons.in/net | M : 9811102124, 9311102124

XPS BOARD

INSUboard is an **Extruded Polystyrene (XPS)** rigid board used for thermal insulation. It is produced from general purpose polystyrene by the process of extrusion. These extruded sheets have a closed-cell structure and virtually no air-voids in between the cells.

INSUboard offers number of special characteristics & advantages for installation of inverted roof system like light weight, negligible water absorption, long term durability, low thermal conductivity, etc. Higher strength make it an ideal solution for Over deck insulation.

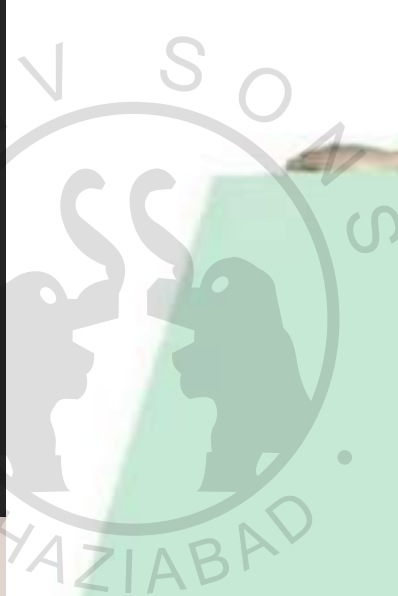
APPLICATION

- External wall Insulation.
- Internal wall Insulation.
- Cavity wall Insulation.
- EIFS (Exterior Insulation & Finishing System).
- Cold Storage.

Available in following sizes -
25mm, 50mm, 75mm, 100mm

Other such sizes are -
30mm, 40mm, 65mm

Customizable as per requirement



Authorised Distributor



WATERPROOFING MEMBRANES

1. APP MEMBRANE

APP stands for **Atactic Polypropylene**. APP membrane is the most commonly used waterproofing material on concrete roofs and low-slope roofs.

APP membrane is applied to asphalts with a torch. Applications of APP membranes aren't limited to just roofs.

APP (Atactic Poly Propylene) 5 Layer Bituminous membranes reinforced with Polyester / Glass Fibre sheet. These membranes are applied on concrete structures by priming & torching.



Available in the following sizes :

1.5 mm Thk : (1×20) mt / Roll

2 mm Thk : (1×15) mt / Roll

3 mm Thk : (1×10) mt / Roll

4 mm Thk : (1×10) mt / Roll

Rates depend upon Specification / brand / quantity of order. Please contact us for details.

Authorised Distributor



2. HDPE MEMBRANE

HDPE Membranes are based on high-density polyethylene material, designed to provide water and water vapour protection to water excluding structures, securing concrete from aggressive ground salts and chemicals related corrosion.



3. PVC MEMBRANE

PVC (Poly Vinyl Chloride), a kind of polymer consisting of petroleum and salt, is produced in petrochemical plants. It is an ideal waterproofing material, can be applied from the foundation to the roof and all interlayers. It is used as a topcoat material to strengthen roof applications and increase their efficiency to extend the life of the roof & to obtain high efficiency from the insulation. It has high resistance to ozone, low temperatures and thermal aging. They also have great tensile strength and long service life.

4. TARFELT

TarFelt consists of a center core of hessian adequately coated on both sides with oxidized bituminous compound. Mica / sand is then spread over on both faces to prevent inter-sticking of layers. Proven first generation waterproofing membrane and recommended for non-critical over ground application.

- Economical with limited life.
- Dimensional stability with pliability to adopt to all contours.



5. SBS SELF ADHESIVE MEMBRANE

Styrene-Butadiene-Styrene (SBS) is synthetic rubber derived from styrene and butadiene. It is a thermo plastic elastomer that has an excellent abrasion resistance and aging stability when blended with bitumen, making it the perfect bitumen modifier to achieve cold flexibility and elastic properties. This material has the ability to retain its shape after being stretched and therefore, is widely used in modified bitumen roofing, coatings, sealants and paving amongst other applications.



6. TPO MEMBRANE

TPO (thermoplastic polyolefin) is a single-ply white membrane used in both commercial and residential roofing. Due to TPO being a white membrane, it reflects heat instead of absorbing it.

If you have a flat roof or a low-slope dormer over a bedroom, TPO is a great option because it'll keep the room below cooler. You can also use it over a non-living space like a garage or covered patio.

7. EPDM MEMBRANE

EPDM is an extremely durable synthetic rubber roofing membrane (ethylene propylene diene terpolymer) widely used in low-slope buildings. Its two primary ingredients, ethylene and propylene, are derived from oil and natural gas. EPDM is available in both black and white, and is sold a broad variety of widths, ranging from 7.5 feet to fifty feet, and in two thicknesses, 45 and 60 mils. It can be installed either fully adhered, mechanically attached or ballasted, with the seams of the roofing system sealed with liquid adhesives or specially formulated tape.



PRIMERS

1. OIL-BASED

Oil-based primers and paints have been an industry standard for decades. These primers work with both oil paints and latex paints, making them very versatile and applicable to a wide variety of surfaces.

Wood (painted or unpainted), steel and other metals, and surfaces with existing paint, such as interior and exterior walls are ideal surfaces for oil-based primers.

Oil-based primers are ideal for interior and exterior unfinished or bare wood because they seal the porous surface of wood, enabling the coat of paint to better cover the surface. They stop tannins, released from woods, such as cedar or redwood, from bleeding through the surface of the paint. They also prevent or slow down paint peeling, cracking and blistering.



Authorised Distributor



2. WATER-BASED

Water based Primer is an acrylic polymerized, water-based primer designed to provide better adhesion for any coatings. Water based Primer has good alkali resistance properties.

APPLICATION

As a primer for subsequent application of top coat for exterior or interior finish.

ADVANTAGES

- Easy to apply.
- Excellent hiding property.
- Fast Drying.
- Excellent coverage.
- VOC Free



3. PU-BASED

PU primer (Polyurethane Based Primer) is single component polyurethane resin based low viscous highly penetrative primer.

APPLICATION

- Concrete / metal surfaces.

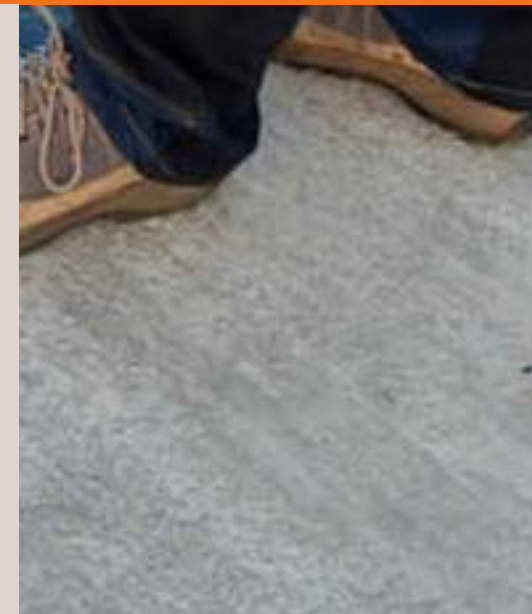
ADVANTAGES

- Better adhesion and flexibility.
- Chemical resistance.
- Improved performance over manually prepared concrete surfaces.



4. EPOXY-BASED

The cold cure epoxy-based red oxide epoxy primer is used as an anti-corrosive primer. It is recommended for application on blast-cleaned metal surfaces. Our product range consists of Two-Component Anti Corrosion Red Oxide Epoxy Primer, 2K Phenolic Epoxy Based Zinc Rich Primer, 2K Epoxy Polyamide Cured Epoxy Primer-cum-Sealer Coat, 2K Anti Corrosive Zinc Rich Primer, 2K Zinc Phosphate Primer, 2K Moisture Curing Zinc Silicate Primer, Silane Siloxane Based Penetrative Primer for Concrete & Masonry Surfaces and 2K Solvent Free Epoxy Primer for Concrete Surface.



WATERPROOFING

1. ACRYLIC

It is an acrylic based Polymer Modified Cementitious Flexible Composite coating system. In conjunction with cement provides properties to combat the shortcomings of plain cement, particularly its poor adhesion properties, low impact strength, low flexural strength and thin section fragility. Polymer adds to the potential use as well as enhances the properties of cement slurry/mortar/concrete making them excellent choice for use in new as well as renovation work.

USES

- It is used for surface treatment, protecting, waterproofing and repairing concrete and masonry.
- Waterproofing of basements, toilets, terraces, roofs, swimming pools, water towers etc. Protection of concrete against corrosion, salt attack.

FEATURES

- Combines a tough, flexible, hard-wearing surface with waterproofing.
- Allows trapped vapour to escape thus preventing peeling and blistering.
- Develops excellent bond to most building materials.
- Reduces or prevents salt penetration into concrete.



Authorised Distributor



2. CEMENTITIOUS PRODUCTS

Our Cementitious Products enable you to create floors of the highest technical and aesthetic quality. The range consists of Elastomeric, Flexible and Anti-root Elastomeric Cementitious Waterproofing Coating Products. The products are used for terraces, balconies, bathrooms, road joists, basins and storage tanks, bentonite sheets, cementitious products and bitumen emulsions.

3. CHEMICAL WATERPROOFING

We offer a wide range of construction chemical waterproofing, for building repairs, tile fixing, sealants, coatings and paints, grouts etc. The product range comprises Solvent Based Colorless Silicone Waterpeller, Acrylic Polymer Coating, Polymerised High Solid Acrylic Coating, Modified SBR Latex Based URP, Integral Liquid Waterproofing Compound, etc.

4. POLY UREA

Our polyurea coating comes with extraordinary elastomeric and mechanical properties. ShaliProtek® PuR 40 is a two component, brushable modified polyurea coating for roof and metal surface with very high durability and excellent waterproofing / protective coating characteristics. It forms a high UV resistance, blister free impervious liquid membrane against moisture with very low water absorption.

5. POLYURETHANE

The products offer a seamless monolithic membrane, which cures when comes in contact with atmospheric moisture to form a UV-resistant, seamless, monolithic waterproofing membrane. The range consists of Elastomeric PU Liquid Membrane, Liquid Applied Polyurethane Waterproofing Membrane, UV Resistant PU Liquid Membrane, Elastomeric High Abrasion PU Top Coat to name a few.



6. SEALING TAPE

Bituminous Flashing Tape Is A Self -Adhesive Tape Made Of A Butyl & Bitumen Rubber Compound, Self Protected By Re-Enforced Aluminum Foil On One Side, And The Adhesive Side Is Protected By Release Film. Flashing Tape Is A Simple Yet Highly Effective Solution For Waterproofing, Sealing, And Insulation.

USES

- Roofs – Around Chimneys And Skylights, Over Joints/ Cracks In Tiles And Roof Cladding.
- Exterior Walls – Joints And Cracks In Asbestos Cement Sheeting, Cracks Under Masonry Ties And Anchorages, Around Wall Penetrations (Such As Water Pipes), Gutters And Downpipes.
- Terraces – At Joints Between Terraces And Exterior Walls, Joints In Parapets, Roof Edges, Sides, Flashings And Joints. Inside The House – Leaking Pipes, Showers Etc.



PROTECTIVE & ANTI-CORROSIVE COATING

1. PYPKOTE

Pypkote is a **Pipeline Corrosion Resistant Tape** conforming to IS 10221 Appendix B specification. It comprises of a Tar based Polymeric mix supported on a fabric of high tensile strength Fibreglass. The Polymeric mix is specially manufactured to have properties of high softening point, high penetration and high resistance to ageing. Tape is terminated on both exteriors by thermofusible HMHDPE Film which aids in the installation process. Over weld joints, the tape is applied after the necessary welding and testing of the joints are completed.

Pypkote tape is recommended for application closer to the time of pipe erection and lowering inside trenches to avoid damages to Pypkote. While in storage, Pypkote Rolls must be stacked properly under cover.

Pypkote is available in 2mm and 4mm.



2. ANTI-CORROSIVE COATING

It is solvent based rubber modified bituminous primer. It is used as a surface preparation for Waterproofing and Pipe Coating Applications. It is cold applied primer. It is supplied in 20 Kg drum. It is a cold applied primer and it is applied by painting over the substrate by brush / spray. Primer is left to dry until the solvent evaporates.

Please note that the primer is inflammable due to presence of solvent. Therefore care must be taken that no flame is applied on the primer before the solvent evaporates. Since the primer contains solvent, prolonged exposure especially in closed areas should be avoided.

It is used to prepare surfaces for pipecoating and wrapping or waterproofing applications. It penetrates into porous subsurfaces and has excellent adherence and elasticity.



Authorised Distributor

Dr.Seal®
Total Water Proofing Products



SEALANTS & ADHESIVES

PLAST & BITUMEN ADHESIVES

It is a cold applied, single component bituminous caulking compound available in the form of putty which forms a smooth and homogeneous paste for sealing of porous concrete, masonry floors, wall, roof and vertical joints between plates, folded sections, wooden joints, etc.

APPLICATION

- Stopping leaks and water proofing of porous masonry and cracked concrete.
- It serves as a caulking agent for crevices for virtual joints between steel plates, folded sections, wooden joints, precast concrete, cladding, block, etc.
- Protection of cooling towers and other installations where they require protection from water.

ADVANTAGE

- Cold applied and ready to use. Does not require specialized handling for application.
- It is ideal for use in situation where expansion, contraction and vibration are expected, like around "J" Hooks used for fixing Asbestos / GI sheets.
- Does not creep or flow when applied on vertical or sloping surfaces.



Authorised Distributor



FLOORING

1. METALLIC HARDER

Metallic Floor Hardener is a metallic compound - tough, ductile, specially processed and prepared in the size graded particles compounded with dispersing agent. This enables metallic floor hardeners to move more easily into the surface. Plain Concrete contains uncountable microscopic cells which tend to disintegrate under constant pressure.

2. NON-METALLIC HARDER

Non-Metallic Floor Hardener is a specially formulated product containing accurately weighed cementitious materials and a high quality natural aggregate which has been graded to particle sizes suitable for flooring work. It is free of organic impurities and provides improved impact and abrasion resistance. Non-Metallic Floor Hardener is plasticized to provide greater ease of placing and finishing.

3. REPAIRING MORTAR

Repair mortars are specifically designed for restoring or replacing the original profile and function of the damaged concrete. They help to repair concrete defects, improve appearance, restore structural integrity, increase durability and extend the structure's longevity. Concrete repair mortars are suitable for restoration work, repair of spalling & damaged concrete in all types of structures including buildings, bridges, infrastructure and super-structures.

Authorised Distributor



BITUMEN PRODUCTS

bitumen is a non-crystalline solid or viscous material having adhesive properties, derived from petroleum either by natural or refinery process. During this process, smaller amounts of crude oil like kerosene, fuel oil, spirit and lubricating oil evaporate.

Bituminous materials were used for the construction of roads, preserving timber and for waterproofing stone walls. Nowadays, they are extensively used for surfacing of road and airport pavements.

GRADES

- Bitumen 85/25 (Cake)
- Bitumen 60/70
- Bitumen 80/100
- Bitumen 85/25
- Bitumen VG 30 & VG 40
- Bitumen 90/15
- Bitumen 30/40
- Bitumen 115/15



OTHER PRODUCTS

1. BITUMEN BOARD

Construction of concrete roads, runways, floor and roof slabs of buildings, involves casting of concrete in slab form, which leads to construction joints. Provision must be made to accommodate the expansion and contraction at these joints which occurs with seasonal variations in temperature.

Bitumen Impregnated Expansion Joint Fillers Boards display excellent resistance to compression, with outstanding recovery characteristics. Provision of these boards in the joints permits free movement of the concrete slabs. This prevents damage to the slabs besides providing waterproofing and resisting entry of foreign matter into the joints

ADVANTAGE

- Closed cell structure resulting negligible water/moisture absorption
- Excellent recovery after compression
- High resistance to chemical like most
- Bitumen free hence non staining and free from bleeding
- Easy to cut, hand and install
- Rot proof hence does not age and disintegrate over prolonged use



Authorised Distributor

Supreme
People who know what's best

Dr.Seal[®]
Total Water Proofing Products

2. BACKER ROD

The circular profile of rods ensures stronger bonding of sealant with masonry, aluminium or other substrates & helps to maintain desired thickness of sealant at the joint's center.

It eliminates bubbling of sealant due to its closed cells.

APPLICATIONS

Precast panel joints, expansion joints, popping joints, glazing joints, isolation joints, control joints, contraction joints and dynamic joints in masonry etc.

Available in 6mm, 8mm, 10mm, 12mm, 15mm, 18mm, 20mm, 25mm, 30mm, 35mm, 40mm, 50mm and 60mm



3. FIBER MESH

Plain Fiberglass Mesh is based on the alkaline fiberglass woven fabric and finished after being coated with an organic material. It is made of fiberglass yarn or roving by means of leno or plain weave.

The material used for coating ensures excellent resistance to chemical substances and increases mechanical durability that is required by the construction industry.

4. NON WOVEN GEOTEXTILE

Geotextile is basically high strength membrane fabric used for fortifying roads. To be precise, this type of fabric is required to fill the gap between soil and road.

Made of PET or PP material, it has wide applications in tunnel and river bank protection project, hydropower and water conservancy works, airport construction assignment etc.

Road Geotextile is 80 g/m² to 1500 g/m² in thickness.

It has unique break strength and tear strength. This product is cost effective.

Available in 100 gsm, 120gsm, 150gsm, 200 gsm, 300gsm and as per customers requirement.



5. POLYESTER FIBER

Synthetic fiber being used in Fiber Reinforced Concrete in India to enhance properties and performance of concrete in many ways.

The basic of concrete is that it has to be durable and needs to restrain cracking which is induced by many factors and one of them being shrinkage in integral part in initial setting of concrete which needs to be taken care of.

Fibers give unparalleled resistance to Plastic and Drying Shrinkage cracking in the next we following applications it has far reaching objective based positive performance



SHIV SONS

CONTACT DETAILS

Mr. Ram Gupta
9811102124, 9311102124

Email: shivsons91@gmail.com
Website: www.shivsons.in/net

Shop No. 7, Shyam Vihar Market,
Opp. LIC Building, Near Swiss Hotel,
G.T. Road Ghaziabad - 201 001(UP)