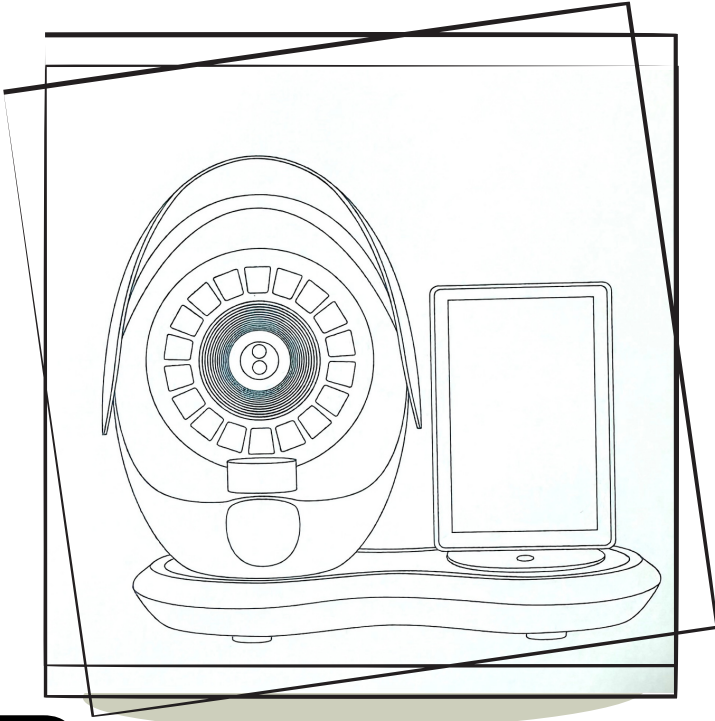




DERMA RAYS
Private Limited



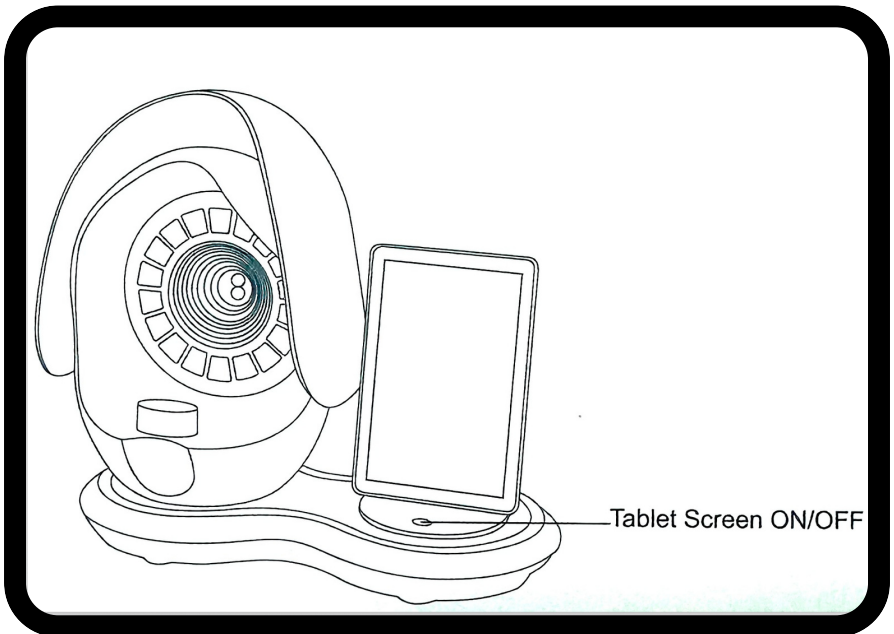
3D SKIN ANALYZER

USER MANUAL



PRODUCT DESCRIPTION

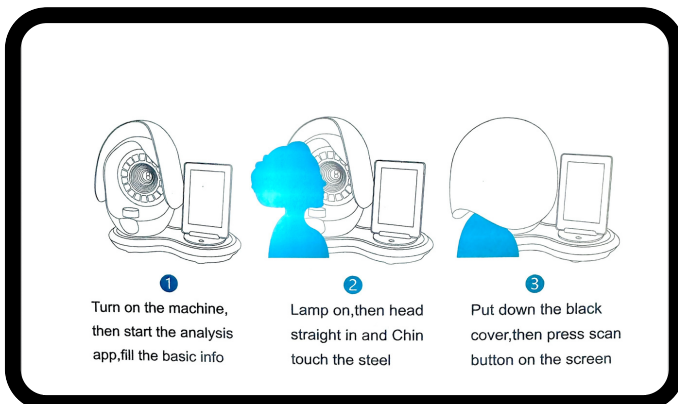
Through the scanning of the full face, it can diagnose the face and visually analyse with enlarged images under spectrum. With the medical optical algorithm analysis, it will delivery medical skin analysis report and offer a set of diagnosis solution.





USE METHOD

1. Connect the power supply and open the power button on the back of the machine;
2. Press and hold the screen button for 3 seconds, wait for the system to start up, and automatically enter the system.
3. Make sure the internet connected. Connect the WIFI on the top of the screen.
4. Fill the complete customer information then login.
5. Go to the scanning page.
6. Lamp on, customer head straight in and Chin touch the steel.
7. Put down the black cover, then press scan button on the screen.
8. After the scanning is completed, open the black cover and the system auto into the analysis report.
9. Select the product to delivery with the report.
10. Check the report on the phone.





FUNCTIONAL EFFECT

FEATURES:

Digital camera pixels	:	20 million Pixels in HD camera
Dual cameras	:	Colorful and monochrome dual camera
Face AI	:	Intelligent positioning the full face
Analysis items	:	Detection for 10 main skin problems
Precise analysis result	:	Accurate analysis result att5% error rate
Product recommendation	:	Refer to the analysis result by build-in the platform
Huge database	:	Linking to the skin database if connect the internet

SPECTRAL IMAGING SYSTEM

Under The Spectrum Under The Filter

General Lamp



Scanning and enlarging the pictures to analyze moisture,oil and wrinkles.

Polarized Lamp



Detect the dermis layer to analyze the red blood.

UV Lamp



Detect the epidermis layer to analyze the pigmentation, pore and acne.



PRODUCT SPECIFICATIONS

Materials-	ABS+Stainless Steel
Power-	30W
Related Voltage-	AC 100-265V 50-60Hz
Temperature -	-5 C~60 C
Net Weight-	Approximate 7.5 KG
Gross Weight-	Approximate 8.5 KG
Size -	Approximate 595mmx480mm×340mm